

The

CREWKERNE

Flyer

SPRING 2021

GRATIS

LOCAL NEWS & PHOTOS

**LOCAL BUSINESSES
& SERVICE PROVIDERS**

REGULAR CONTRIBUTORS

**LOCAL TOWN
& AREA MAPS**



Henry Bowers Workshops,
Furnham Road, Chard, TA20 1AX

FOR FANTASTIC SAVINGS

**BUY FROM OUR HUGE STOCKS OF
CARPETS AND BEDS**

SAMPLES & MEASURING SERVICES + FREE DELIVERY

www.pcscarpets.co.uk



Tel: 01460 61717

SALE
NOW ON



STUFF STORE



Are you running out of space?

SELF STORAGE

Our self storage units next to
CREWKERNE TRAIN STATION
are ideal for personal and business use

- » Secure with CCTV
- » Clean, dry units
- » Easy access
- » Automated gates
- » Affordable
- » Book online!

BOOK ONLINE NOW!
OR CALL 0845 544 3460

www.stuff2store.co.uk

SPRING HAS SPRUNG!



There is a great deal of optimism and anticipation as we go to press in the middle of March 2021. April 12th should be the day for non-essential retail businesses to open, with hospitality soon after on 17th May.

During this latest, and longest “lock-down” it is admirable just how many essential businesses have continued to serve their customers despite very difficult, and often loss-making times. I really hope you all continue to support local businesses as times improve.

WINNERS! Two local ladies recognised the farm buildings featured in our Winter Edition. Both Joan Worner and Margaret Barnham correctly replied “Manor Farm Buildings, Haselbury Plucknett.” Easily visible from 2 footpaths through the farm. Thank you both for participating.

Our editorial team have been busy with articles in this edition covering Southcombe’s sheepskin factories; work on the railway line near Crewkerne; and a walk around Bincombe Beeches, the cemetery, and Misterton.

Contributions came in from Crewkerne Rotary, Crewkerne in Bloom, Crewkerne Museum, The Speedwell Hall and Space4 Crewkerne.

Best wishes,

Anthony Bucke, Editor, Wednesday 17th March 2021

E. crewkerne@theantiquetourist.com

W. www.thecrewkerneflyer.co.uk

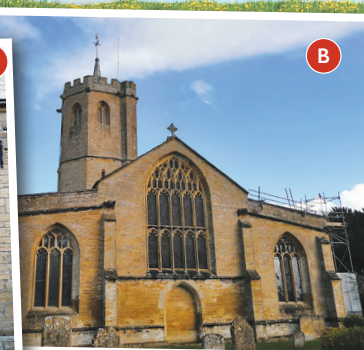
 PLEASE LIKE US AND FOLLOW US
@TheCrewkerneFlyer

Competition

Where and what are these 2 buildings?

Please email your answers with your name to
crewkerne@theantiquetourist.com

Correct answers in our next edition.



Disclaimer: The Crewkerne Flyer is published by Viney Bridge Publications, The Old Textile Mill, South Street, Crewkerne, TA18 8AG. Whilst every effort is made to ensure accuracy, no liability is accepted by the publishers for inaccuracies or omissions in the content of The Crewkerne Flyer. This publication is distributed free of charge in the TA13, 14, 15, 16, 17 and 18 postcodes. If you would like your own free copy, please contact the publishers with the above contacts.

No content of the publication may be reproduced without the written consent of the publishers.

Copyright: The Crewkerne Flyer 2021.

Chalmers & Co

chartered accountants

Free initial consultation

- Personal & Business Tax Advisors
- Business Start Ups
- Payroll Bureau & Auto Enrolment
- Accounting & Audit Specialists
- Full Business Support Services
- VAT Returns & Advice

Your success is our business



For all our recent updates 'like' us on Facebook

www.chalmersaccountants.co.uk

info@chalmersaccountants.co.uk

Offices at Crewkerne, Langport & Yeovil

01460 279000

Craftwood TIMBER GATES

We can measure it
We can make it



Garden Gates - Made to Measure
Infil - Feather Edge - T&G - Shiplap
T&G with Square / Lattice Trellis
COMPETITIVE PRICES - NO VAT
Delivery Available

Call: 07966 000909

Unit 3, Crewkerne Station Business Park, TA18 8AU

Looking for care in your own home?

Contact us for a free consultation and assessment

A discreet and professional service offering person-centred support to help you live independently in your own home.

Whether it's respite support, companionship, help around the home or complex care, we are here to help.



A trusted charity at the heart of your community

"The support was invaluable and kept me going at times when I otherwise would have struggled."
Niece of Care South at Home client

Contact our Somerset & West Dorset team today

01460 270500 | hccrewkerne@care-south.co.uk
care-south.co.uk/care-at-home

Care
South
at home



AISTHETA
Skin Clinic

GAYNOR HUGHES

Aesthetic Treatments

- Skin Rejuvenation
- Dermal Fillers
- Thread Veins
- Medical Skin Care
- Lines & Wrinkles

Free Consultations

Tel: 07866 438120

Email: info@aistheta.co.uk

Lyme Road, Crewkerne

TA18 8HE ← NEW LOCATION



www.aistheta.co.uk



Allen Computer Services

Business & Personal PC & Mac

Sales - New & Refurbished
Repairs, Upgrades & Servicing
Printers, Ink & Paper
Support Plans & Cloud Backup
Antivirus & Security Checks
Call Outs & Remote Support
Domain Names, Hosting & Emails



01460 298036



support@allencomputerservices.co.uk



www.allencomputerservices.co.uk

Your local IT professionals

27 South Street, Crewkerne TA18 8DA

ELSWOODS CLEANING SUPPLIES

Established 1972

REPAIRS & SERVICE FOR MOST DOMESTIC, COMMERCIAL & INDUSTRIAL CLEANING MACHINERY

All Cleaning Products in Stock
Sales and Service Agents for:
UNGER - PROCHEM - RUG DOCTOR
SEBO - NUMATIC

**Open: Monday to Friday
9am - 5.30pm**

Showroom with Ample Parking

Like & follow us [f@ElswoodsDirect](https://www.facebook.com/ElswoodsDirect)

STANDARD £25.00 + PARTS (if required)
+ VAT for any domestic machine service



**WE STOCK A LARGE RANGE OF PPE INCLUDING SANITISING SPRAYS, FACE VISORS,
FACE MASKS, GLOVES AND HAND SANITISING GEL**

SALES • SERVICE • REPAIRS

E. service@elswoods.com T. 01460 73423 W. www.elswoodsdirect.com

ELSWOODS DIRECT | BLACKNELL LANE INDUSTRIAL ESTATE | CREWKERNE | TA18 7HE

THE VEG SHED LTD



Bespoke Essentials and
Fruit & Vegetable Store

Food Delivery Service

9 The George Shopping Centre,
Crewkerne TA18 7LU

07553 018989

www.thevegshed.shop

vegshed@yahoo.com



www.georgeshoppingcentre.co.uk

Grand Interiors

Furniture, Homeware & Gifts

www.grandinteriors.myshopify.com

grand-interiors@outlook.com

Tel: 01460 929470



Grand Interiors



[agrand_interiors](https://www.instagram.com/agrand_interiors)



2 The George Shopping Centre, Crewkerne, TA18 7LU

The Pet Shop Dedicated to your Best Friend

**Wet, Dry & Frozen
Raw Smorgasbord
of Delicacies**

**Healthy Diets &
Supplements for all
your Companions**

**Toys, Gifts &
Playtime**

**Bath Time
Essentials for the
Pongy Pooch**



#myBestie
www.mybestiepets.co.uk

**Canine Outfitters
for the Posh
or Practical**

**Bedding, Snuggles
& Catnaps**

**Safe Travel
Accessories**

**Harness, Lead &
Collar Boutique**

**Banquet of Wild
Bird Foods &
Accessories**

10 The George Shopping Centre • Crewkerne • Somerset TA18 7LU

01460 77106 mybestiepets.co.uk

info@mybestiepets.co.uk [@MyBestiePetShopCrewkerne](https://www.facebook.com/MyBestiePetShopCrewkerne)



Southern Conservatories

Think Local, Buy Quality, Choose Southern



Visit one of the largest Show Sites in the Southwest!
Offering a huge range of products to suit every home and budget.



Award winning Southern Conservatories Ltd have been improving homes across the Southwest and beyond for nearly 40 years, installing quality UPVC, Timber and Aluminium Conservatories, Doors and Windows.

Our experienced and friendly team take a real pride in every installation we carry out to fulfil our customers dreams from concept to creation.

Southern Conservatories Ltd are proud to be registered Guardian Warm Roof installers, also using the latest solid Ultraframe roof systems including the LivinRoof and UltraRoof.

It's the perfect time to update your conservatory or build that new glazed extension you've always dreamed of, ready for the summer and the promise of meeting up with family and friends.

We are hoping to reopen the Show Site to customers on Monday 12th April and on Saturdays from the 17th April in line with the Government roadmap.



Conservatories, Windows, Doors & Solid Roof Systems



www.southernconservatories.com

Call us on: 01460 76274 | Southern Conservatories, North Perrott, Crewkerne, Somerset, TA18 7SS

COVID 19 AND THE ROTARY CLUB OF CREWKERNE



Like many organisations the **Rotary Club of Crewkerne's** activities have been curtailed by the covid-19 virus. Activities with the local schools like the **Young Chef** and **Young Musician competitions** and the **Rotary Technology Tournament** which attracts 96 students from 6 local schools and the **Big Pitch business projects**. Even the presentation of 120 Usborne Dictionaries to Year 6 at Maiden Beech was somewhat different this time. Our Rotary Shop which is well supported by the local community did not take place thus reducing the support we can give.

Following Government advice and the wellbeing of members we were not able to assist at the vaccination centre at Henhayes although our daughter club, Crewkerne District, have been a tremendous help.

However, that is not to say we have been idle. We have weekly Zoom meetings with a guest speaker and whilst we may not have been physically helping, we have assisted several local organisations financially. Not just from club funds but members have dug deep into their own pockets as well.

During the past year we have donated, in total, more than £7,000 to various organisations including **Crewkerne Community Church, Henhayes Centre, Crewkerne in Bloom, ARK at Egwood, Yeovil District Hospital Breast Cancer Unit, Pilsdon Community Centre, Magdalen Environmental Trust, Children's Hospice South West, Dorset & Somerset Air Ambulance and Christmas Toy Boxes for Kids Out.**

There is light at the end of the tunnel and come late summer we are, hopefully, physically active once again.

Would you like to help your local community?

Joining your local Rotary club will give you the ideal opportunity and you'll have great fun too!

To find out how you can join, email membership@crewkernedistrictrotary.org.uk or call **Martin Holley** on 01460 67249



Regency

Care & Mobility



"For a new
lease of Life"

01460 271172

www.regencycareandmobility.co.uk

- Rise and Recline Chairs
- Rise and Recline Beds
- Bath Lifts
- Mobility Scooters
- Daily Living Aids
- **FREE** After Care Service
- **FREE** Call Outs & Home Demonstrations

Open
Monday to Saturday
9:00am to 4:00pm

Part exchanges offered
on scooters



10 Falkland Square
Crewkerne TA18 7JS

Email: regencycareandmobilityltd@btconnect.com

Working with the NHS



Crewkerne in Bloom!

Snowdrops have emerged, crocuses are opening and daffodils are nodding their heads. Spring is here and whichever way you look at it, **Crewkerne is Blooming!**

Eye-catching flower displays welcome all from every direction while cheery pops of floral colour brighten a stroll through our lovely old town.

At the **Rotary Stone** the Daphne with its amazing fragrance was an early starter, then the daffodil and crocus bulbs planted by volunteers last Autumn burst into carpets of beauty.

See them at **St Bartholomew's Churchyard** with its new, seasonally planted areas and stop at the **Luccombe Oak in Henhayes** to take in the fabulous purple swathe.

Thanks to volunteers, carefully tended beds in **Church Street, West Street and Rose Lane** are all looking lovely.

And now, what better incentive to get cracking with your own planting and tidying than the announcement of a new **Crewkerne in Bloom garden competition?** Our volunteers won a variety of awards last year and while we're looking forward to entering this year's contests, we invite Crewkerne residents to join in the fun too.

We have come up with four simple categories with full details to follow:

- **Front garden**
- **Front of house collection of pots and/or hanging baskets**
- **Photo/s of back garden**
- **For children - any plant/plants in a pot up to 15cm**

Judging will be in July so start planning now!

Meantime, if you don't have an outdoor space of your own, or you'd like to help Crewkerne to continue looking beautiful, **do please join us.** No experience needed, only your enthusiasm.

Just your support will be equally welcome. You could **become a Friend** for £10 a year. Renewable membership starts in April and gives you regular updates, information on meetings and generally helps keep Crewkerne looking colourful.

While we will continue to work on our usual areas, we'd also like to help keep the **Cemetery** looking its best. Maybe you visit to remember a loved one and could give some tender loving care to the surrounding beds? Setting up a band of volunteers of all ages is one of our aims for the year.



For further information, to Volunteer or become a Friend, contact 01460 72665 or hello@crewkerneinbloom.org



Safe, Secure & very, very strong....

The **ULTIMATE** garden fence



Colourfence are transforming gardens across Dorset & South Somerset.

A garden fence built to last, with colourfence once it's up it stays' up, resisting wind gusts of up to 130mph!

Colourfence panels are made from innovative Colorbond Steel and are guaranteed to last at least 25 years, an occasional wash down with water will leave your fence looking beautiful year after year.

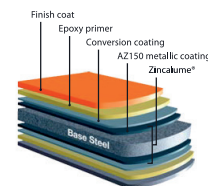
Available in a variety of heights and colours, with or without trellis.

A fence that requires no painting or treatment!

The Fence that repairs itself.

If you scratch or cut Colourfence, the ingenious zinc element in the Zincalume steel reacts with moisture to form a protective barrier to prevent any corrosion with no action needed from you.

STRONG, SECURE & BUILT TO LAST!



The only fence that won't

☑warp ☑crack ☑shrink ☑rot ☑peel ☑break ☑blow over

...well for 25 years, at least!



For a **free** no-obligation site visit, please call **Andy & Shelley.**

tel: **01935 481013** | www.colourfencesouthsomerset.co.uk





CREWKERNE CARDS

5 Falkland Square
Crewkerne TA18 7JS

01460 74070



Deliveries available
Check website for details

www.thepigpen.net
kath@thepigpen.net

Come and enjoy a magical evening at the famous 'Friday Feasts' - Relax with a delicious supper and stay warm by the open fires.

Over Stratton TA13



DERICK YOUNG

TEL: 07803 763240 EMAIL: Derick.driving@mail.co.uk

DVSA DRIVING INSTRUCTOR & FLEET TRAINER

Like & follow on facebook @DerickYoungDrivingTuition&FleetTraining

3D CLEANING

LADDERLESS GUTTER CLEARING,
SAFE AND EFFICIENT



FOR FREE ESTIMATES CALL,
DAN 07903 303191
NIGEL 07950 488021

PLEASE TAKE A LOOK AT OUR OTHER
SERVICES ON **3DCLEANING.CO.UK**

Misterton Garage LTD

MOTS & SERVICING • COMPETITIVE PRICES
BATTERIES, TYRES • EXHAUSTS & BRAKES
FREE COURTESY CAR
QUALITY NEW & USED CARS
PETROL STATION
ALL MAKES & MODELS SERVICES

FORD SERVICE CENTRE



www.mistertongarage.co.uk
Tel: 01460 72997 Fax: 01460 73661
Misterton, Nr Crewkerne TA18 8LY



Phone: 01460 242609
Email: ablealexoffice@gmail.com
www.ablealex.co.uk
You can also find us on Facebook @handymansouthpetherton

We are a local company covering Crewkerne to Bridport and other surrounding areas

Our services include:

- Bi-weekly / monthly lawn cutting
- Garden and Patio maintenance
- Hard Landscaping, such as decking, patios and fence installations. Along side other services
- Soft landscaping, such as planting and general gardening
- Hand drawn garden design



Unit 2 | The Old Yard | Logge Farm | South Petherton | TA13 5DJ

A LATE WINTER WALK

Bincombe Beeches, Easthams and Misterton.

This is a very varied circular walk through town and country, with some stunning views. The way can be wet and muddy, with one steep climb at the outset.

This is a very “eco-friendly” walk as the start/finish is easily accessed and with bus stops, and Crewkerne railway station along the route. But because the walk covers Crewkerne and Misterton, you could even start from your own front door!

We started at Market Square, Crewkerne, outside the Town Hall. (to locals The Victoria Hall). Walk behind the hall and take the lane past Stokes Partners. Almost immediately turn left to Bincombe Beeches. This is a steep climb, but with huge rewards as soon as you arrive at the meadow, and look back over Crewkerne town centre. A further short climb takes you though the beech trees onto the

plateau. From here on a clear day there are views to Cadbury Castle and The Mendips. Reputedly a timber church stood here in the 15th century. It's worth taking time walking around Bincombe Beeches, as the area is very well managed, and you will find remains of the original farming practices still in evidence – if you look hard!

We moved east behind the bungalows, around the sports field, then turned left between the pitches towards Ashlands Road. An alleyway on the right takes you through the houses to Ashlands Road, and then the A30. Turn right here, and within 200 yards enter Townsend Cemetery on the left. This charming, if melancholy spectre is worthy of a few minutes' humble reflection. Exit the cemetery in the eastern corner and take the ancient trackway towards Easthams Farm.

At the concrete road turn right, then keep right down across the escarpment. It is worth reflecting that the proposed Crewkerne Link Road will have to scale this slope! Halfway down, turn left and follow the pathway through the stile back onto the concrete road. Then past a charming isolated cottage and down past an abandoned pigsty to the righthand bridge.

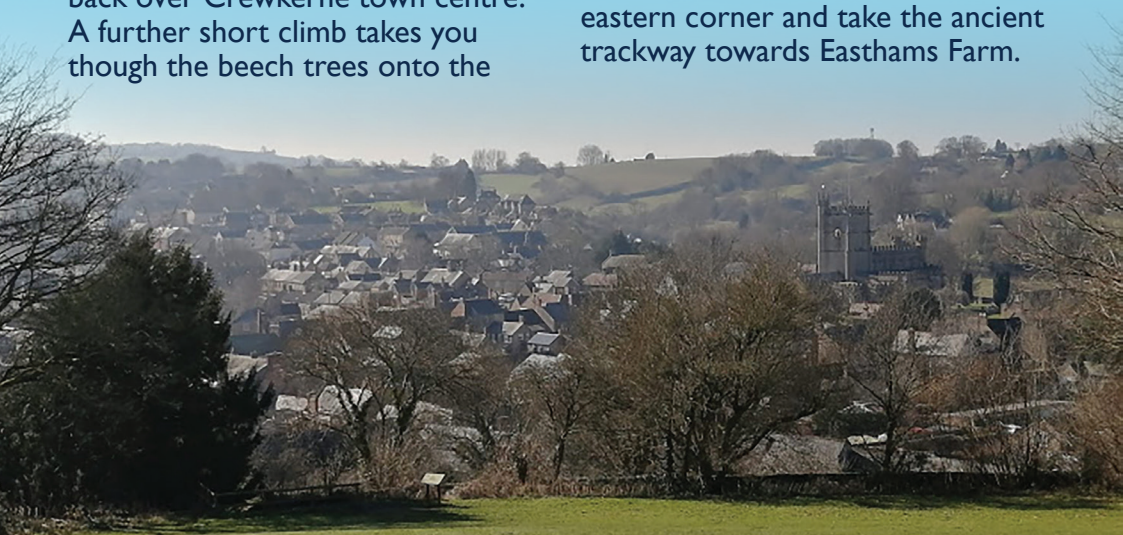
Once across the bridge, hug the river on the left, then the copse and continue to the end of the copse, then look for the stile straight ahead, leading into a muddy tree-lined track. Go to the end of the track, then straight ahead across another field into a sunken lane. Turn right, and within 500 yards, turn left and cross under the railway line through a magnificent arch. Turn immediately right, then diagonally left across the playing fields to a green lane. Then past the pigmy goats and allotments.

Descend steep steps onto the busy road at Misterton. Turn right and follow this road all the way past Crewkerne Station, then down Station Road, along South Street and Market Street, back to The Square in Crewkerne.

DISTANCE: About 4.5 miles.

DURATION: hours, to 2 hours 30 minutes depending on how long you spend at Bincombe Beeches and Townsend Cemetery.

LEVEL OF DIFFICULTY: Comfortable





WAYFORD

VINEYARD

★ SPARKLING SOMERSET WINES ★

WWW.WAYFORDVINEYARD.COM

10% discount on all wine purchased online and direct from our vineyard to be redeemed by the 1st June 2021.
USE CODE: CF1

DUNSHAM LANE,
WAYFORD,
SOMERSET
TA18 8QN

01460 78907
07941 101668

Follow us on  

Wayford vineyard can be found in the tranquil village of Wayford on the Somerset Dorset border, 3 miles from Crewkerne.

The vineyard came into existence when 10 couples from the village and locality decided to embark on an adventure into the world of viticulture.

Overlooking the Axe valley we have around three thousand vines which produce our award winning white sparkling wine.



Follow us on  



GET IN TOUCH TODAY
07728 291422

My company specialises in groundcare and construction machinery repairs and servicing. Having worked and trained with a dealership we have recently invested in our own workshop with a sales and parts department working to support machinery across the board.

I would like to take this opportunity to offer support for your groundcare and construction machinery from small and large grass cutting equipment to diggers and earthmoving equipment.

Our fully equipped workshop is based in Bower hinton near Martock, Somerset. We carry a full selection of parts to ensure a quick turn around of machinery to reduce down time.




HEALTHY HAPPENS WHEN...
YOU DISCOVER WHAT MAKES US DIFFERENT

ALWAYS OPEN 24/7

ACCESS 4500+ GLOBAL CLUBS

QUALITY EQUIPMENT

PRIVATE SHOWERS

FRIENDLY SUPPORT

WORKOUTS APP

SCAN THE QR CODE TO VISIT
ANYTIMEFITNESS.CO.UK/YEOVIL OR
CALL 01935 350247 TO FIND OUT MORE!

Anytime Fitness Yeovil
Quedam Shopping Centre, 4-6 Frederick Place, Yeovil, BA20 1LD
ANYTIMEFITNESS.CO.UK/YEOVIL

Have you booked your lawnmower in for its annual service? Keeping your lawnmower in good condition ensures it's ready to work when you are.

On-site service or collection & delivery available on request

BOOK YOUR SERVICE:

07728 291422

Sparrow Works, Martock TA12 6LG

**SERVICE
REMINDER**



NEW & USED MACHINERY

Do you have any unused horticultural machinery taking up space? We offer a no hassle, buy-back scheme with free quotations.

Thinking about upgrading? We have great prices on trade-in machinery & can buy back your old in any condition.

Pedestrian & Ride-on Lawnmowers | Chainsaws | Strimmers | Blowers | Hedgecutters



GREEN MAN
CONSERVATION SERVICES

Tree Surgeon

Qualified, experienced and insured

Pruning, Thinning, Reductions

Branch Removal • Tree Removal

Hedge Cutting and Management • Hedgelaying

Tree Planting • Bat Surveys • Veteran Tree Management

Woodland Management • Coppicing • Pollarding

Please contact Harry to arrange a
free, no obligation quote

07535 777 559

greenmandorset@yahoo.com

www.greenmandorset.co.uk



SHORT STOPS

Looking for somewhere to stay while
visiting relatives, house hunting, or
taking a weekend break?

Small 1-bed self-catering bungalow,
off-road parking in a garden setting.

Very reasonable rates.

HILARY LEAMON - 01460 77014

BIKE - VET

Bike in need of Repairs? Servicing? Inspection?
FOR BIKES WE ARE THE MOBILE SERVICE

BIKE-VET®

You call. We arrive at the location of your choice.
Our mobile workshop is fully kitted with spares, the necessary
tools and we carry out all repairs. We serve all areas covered by
this magazine. Contact Graham for an appointment to suit you.

Phone: 01935 473034 | Mobile: 07749 245603

We also have new and used bicycles for sale

Graham Gillard, 87 Magna Close, YEOVIL, BA21 5RS



Medland Sanders & Twose Ltd are a well
established, privately owned company
providing machinery sales, service and
parts supply solutions to the **Groundcare,**
Agricultural and Engineering industries,
based predominantly in the South West of
England.

Founded in 1830. MST now have **three depots**
dotted around two counties Somerset and
Devon.

Originally a dedicated Massey Ferguson
Agricultural Engineering business, this
progressively changed with the addition of
specialist divisions supplying equipment
into the **Lawn & Garden and Professional**
Groundcare.

To name a few of our brands,
we proudly supply Stihl, Stiga,
Mountfield, Cub Cadet and of
course, we are Honda main
dealers.

**Not only do we supply
these brands but we
service and repair
them as well.**



01460 241286
www.mstgroup.co.uk

Leading supplier and servicer of specialist
land machinery across the South West.

New & Used Machinery

- Agricultural
 - Ground Care
 - Garden Machinery
 - Honda
- and so much more...



Service & Parts

MST's large team of
manufacturer-trained engineers
in Somerset, provide a high
level of service second to none.



WE ARE HERE TO HELP 24/7 (Emergency Line)

07774 750825 / 07721 985113

HONDA
AUTHORISED
DEALER

Unit 4, Yeabridge Farm,
South Petherton, Somerset TA13 5LW

SALES
SERVICE
EXPERTISE

JFCars
southwest LTD.

QUALITY USED CAR SPECIALIST IN CREWKERNE SOMERSET WITH FULL DEALER FACILITIES

- PART EXCHANGE TAKEN
- FINANCE AVAILABLE
- CREDIT & DEBIT CARDS
- QUALITY CARS PURCHASED

01460 72517

07904 034527

jandfcars2010@yahoo.co.uk

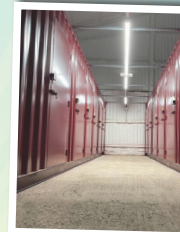


WWW.JFCARS.NET

BarnStore is situated at **Yeabridge Farm**, South
Petherton. The farm is currently owned by **Joe** and
Victoria Broughton. Farming is at the heart of
what they do, however having such a lovely setting
is a wonderful addition when you're looking for
self storage.

BarnStore is located in one of the
modern farm buildings and so
benefits from being **insulated**,
meaning the temperature stays the
same all year round, enabling your
goods to be stored without fear of
condensation. **Units range from**
40sq ft up to 160sq ft.

The farmhouse is located on site
and so Joe and Victoria are always
around when needed. This plus the
fact that you can enter BarnStore
without any additional charges
7 days a week / 24 hours a day
mean it is the perfect location to
store your goods, whether you're
moving house or looking for longer.



SECURE SELF STORAGE
24/7 ACCESS
UNITS GROUND LEVEL
OWNER LIVES ON SITE
LOVELY LOCATION

www.barn-store.co.uk
01460 242800

YEABRIDGE FARM
PRODUCE, GLAMPING, STORAGE

Yeabridge Farm, South Petherton
Somerset, TA13 5LP



Over 50 Years Combined Manufacturing & Fitting Experience

Family Run

Friendly Customer Service

24/7 Quoting & Ordering

P&P TRADE WINDOWS PHILOSOPHY: To provide top quality, bespoke PVCu Windows, Doors and Conservatories that are made to measure at highly competitive prices.

Contrary to popular belief, not all Double Glazing companies are the same! - At P&P Trade Windows, we pride ourselves on being able to offer something that the others don't!

With over 50 years combined fitting and manufacturing experience, **P&P Trade Windows** know the service that our Customers need. Our in-house manufacturing facility complimented by our fast and reliable delivery system, allows us to offer an unrivalled Customer Service, which is why we are one of the leading Double Glazing suppliers in the South West.

P&P Trade Windows initially started as a small independent family window fitting business in 1997.

Tel: **01935 825900** | Website: www.pandptradewindows.com | Email: sales@pandptradewindows.com

This hugely successful business has now added a 6,000 Sq Ft Factory and Offices to its portfolio. The Factory holds an extensive, modern manufacturing facility that is capable of producing A-rated PVCu frames, as well as PASS24 and Document Q for Windows, Doors and Conservatories. All made to measure especially for our Customers.

The addition of this in-house capability, coupled with the provision of a nationwide delivery service and fast and reliable service allows **P&P Trade Windows** to provide the Customer with exactly what it needs: Quality, Range and Price. This together enables us to meet Customer deadlines.

P&P Trade Windows are able to offer an extensive range of products that are not just restricted to those manufactured in-house. We also offer Aluminium Bi-Fold Doors, Aluminium Windows, Sliding Sash Windows, Composite Doors and Solid Roofs to name a few. All products are available in both standard and bespoke colours, as well as a full range of hardware.



Specialist Legal Advice and Solutions
for whatever life brings - at home or at work

Agricultural Matters • Business Services
Commercial Property • Construction
Debt Recovery • Dispute Resolution
Employment • Family Matters
Immigration • Landlord & Tenant
Lasting Powers of Attorney • Matrimonial
Moving Home • Medical Negligence
Personal Injury • Planning • Probate
Tax Planning • Wills, Trusts, Estates

enquiries@battens.co.uk
0800 652 8373
www.battens.co.uk
Yeovil, Sherborne, Castle Cary,
Dorchester, Wareham, Bath and London

Lexcel
ACCREDITED

THE ADMIRAL HOOD

Mosterton • Beaminster • Dorset • DT8 3HJ

HONEST FOOD IN A REAL PUB

STILL HERE BATTLING ON !

Telephone: 01308 868338

www.theadmiralhood.co.uk



BUSBYS RECLAMATION

BUILDING & ARCHITECTURAL

- Reclaimed Bricks & Stone
- Clay Roof Tiles & Slates
- Flagstones/Cobbles/Paving
- ...and much much more!

Come and visit our yard at Donyatt, Ilminster, Somerset TA19 9PX or visit our website to see our range of products:

www.busbysreclamation.com

George: 07795 403510
Email: info@busbysreclamation.com





Ofsted No 143133

WELCOME TO OUR PLAYGROUP!

Opening times
8.30am to 3.30pm term time.
2 year old, 3-4 year old funding available
also 30 hours funding

Playgroup Rooms, (under) United Reformed Church,
North Street Stoke-sub-Hamdon TA16 6QQ

Tel: 01935 826832
hamdonplaygroup@btinternet.com



THE OLD DAIRY

cafe farm shop

Bower Hinton Farm, Martock TA12 6LH



Brunch, lunch, drinks and cakes
Opening times: Mon - Sat 10am till 3pm
(Hours may vary check website for details)

Delicious handmade street food, breakfasts and cakes using local ingredients and produce fresh from the farm.

- Parking • Disabled access • Dogs welcome
- Children's menu • WiFi • Farm shop

www.theolddairycafe.uk





to us, it's personal.





The best home to be in is **your own**

Every morning when the third stair creaks, it reminds me of Margaret. She'd always told me all her life to fix it. I'm just glad I never did. Because I realise that's home.

Having Home Instead Senior Care help me around the house means I don't have to go anywhere.

Stanley T
- Stanley T. Client

If, like Stanley, you would like to remain in your own home, we can help.
homeinstead.co.uk/yeovil-bridport or call 01935 577030

PERSONAL CARE | MEMORY CARE | COMPANIONSHIP | MEALS AND NUTRITION

Each Home Instead Senior Care® franchise office is independently owned and operated. Copyright © Home Instead 2019.

MOTs CLASS 4&7

RAC
Approved Garage



CSG CREWKERNE STATION GARAGE

MOTs • REPAIRS • SERVICING • DIAGNOSTICS

Unit 3 Crewkerne Station Business Park, Station Road,
Crewkerne TA18 8AU (behind bradfords)

Cars, vans, 4x4's motorhomes all makes & models.

Tel: 01460 247446

crewkernestationgarage.co.uk




Coombe Farm Engineering
Part of the A H Warren Trust
Tel: 07788534707 Email: JonnyKeeble@ahwarrentrust.co.uk

Services we offer:

- On site welding
- Fabrication
- Sheet metal cutting & folding
- Steel & sundries stockist
- Custom build yards & handling systems
- Farm machinery repairs & servicing
- Tractor & Telescopic handler servicing & repairs
- ATV & Buggy servicing & repairs
- Hydraulic hose replacement
- Tilly Trailer testing, servicing & repairs
- Electric gate manufacturer
- Auto Scraper & slurry system maintenance & repairs
- General farm maintenance



Jonny Keeble
Workshop Manager, A.H Warren Trust Ltd
M: 07788534707
E: JonnyKeeble@ahwarrentrust.co.uk
W: ahwarrentrust.co.uk
A: Coombe Farm, Roundham, Somerset, TA18 8RR

A H WARREN TRUST GROUP

CAROUSEL Arts & Crafts



Carousal is a small high street shop in the market town of Crewkerne in Somerset where we sell crafts and artwork made only by local artists and artisans.

Our shop is open for browsing at **29A Market Street, Crewkerne, Somerset TA18 7JU.**
Or you can buy online by scanning the QR Code or visiting our website **www.carouselartsandcrafts.co.uk**

Tel. 01460 75761



WIDWORTHY COMMERCIALS
www.widworthycommercials.co.uk



High quality second-hand vans for sale

OVER 20 YEARS EXPERIENCE,
FAMILY RUN BUSINESS

Find us behind Bradfords, next to
the train station, UNIT 3 CREWKERNE
STATION BUSINESS PARK, STATION ROAD,
CREWKERNE, SOMERSET TA18 8AU

f @WidworthyCommercialsSWLtd




Contact us directly: **01460 247446** | Email: **widworthysw@gmail.com**

CPL DISTRIBUTION

**YOUR LOCAL STOCKISTS OF
SMOKELESS FUELS
KILN DRIED WOOD
CHARCOAL & COMPOST
BASED AT CHARD**

Opening Hours - Mon to Fri 7.30am to 4.30pm
CPL Somerset Coal, Beeching Close, Chard, TA20 1BB
Call **01460 63377** or order online at **www.cpldistribution.co.uk**
ORDER YOUR WINTER FUEL NOW AT GREAT PRICES



CASH & CARRY and HOME DELIVERIES AVAILABLE

CREWKERNE EMBANKMENT

Osborne were tasked to stabilise an embankment between Crewkerne station and the level crossing on Cathole Bridge road.

The embankment had failed several times over many years, even though it had been fixed in localised areas before the failures continued.

One of the main issues of a project of this nature is the logistics. When planning this job we had to contend with the weak bridge at Misterton, the level crossing adjacent to the site entrance and the narrow country road leading to the site. Even though no consent was required from the local highways at SCC we did liaise with them and listened to their advice before we commenced the project.

The project was mobilised late November 2020 and for the first month before Christmas all of the enabling works were completed. Due to the marshy conditions on site, we only had

OSBORNE

one area that was suitable for the haul road which restricted access to a single lane. Even though we have access through a large field the main works are in the far corner adjacent to an existing culvert and a stream.

The latest works are a combination of a retaining wall and an embankment re-grade.

The retaining wall will be a Gabion wall, 135m long and 3.5m high. The wall comprises of over 400 individual baskets which are stacked to form a continuous wall at the toe of the embankment placed on a stone base which was installed at a slight angle so the baskets lean slightly towards the railway.

Once the gabion wall is completed stone is placed in layers behind the wall and compacted in accordance with the design. We will then cut a series of steps in the embankment

for two reasons, one to remove all the organic material and secondly to form steps to help prevent further slippages in the future. Material is then placed in layers and compacted all the way to the top of the embankment. This is then followed by an embankment regrade to the new profile as shown in the design.

Once completed the site would have had approximately 19,000 ton of stone delivered, this includes the oversized stone for the gabion wall. On completion

the embankment will be topsoiled and seeded so that the works blend into its surrounding.

We are anticipating project completion and remove from site before the end of April 2021.

*Derek Rapson. Project Manager,
Geoffrey Osborne Ltd Geotech Division.*



kcode
DESIGNS

Small & Large Format Printing

Printing Design

Website Design

Website Maintenance

Logo & Branding Design

• Modern & Bespoke Designs

• Quality Printing

• Competitive Prices & Fast Turnaround

sales@kodedesigns.com



www.kodedesigns.com



Call James On: 07712 129876

**PLANET
OF THE
CREPES**

7 DAYS A WEEK @ANTIQUES BAZAAR

TELEPHONE ORDERS: 07845 705630

BREAKFASTS • CREPES • HOT & COLD DRINKS

Rodfords THE FLORIST

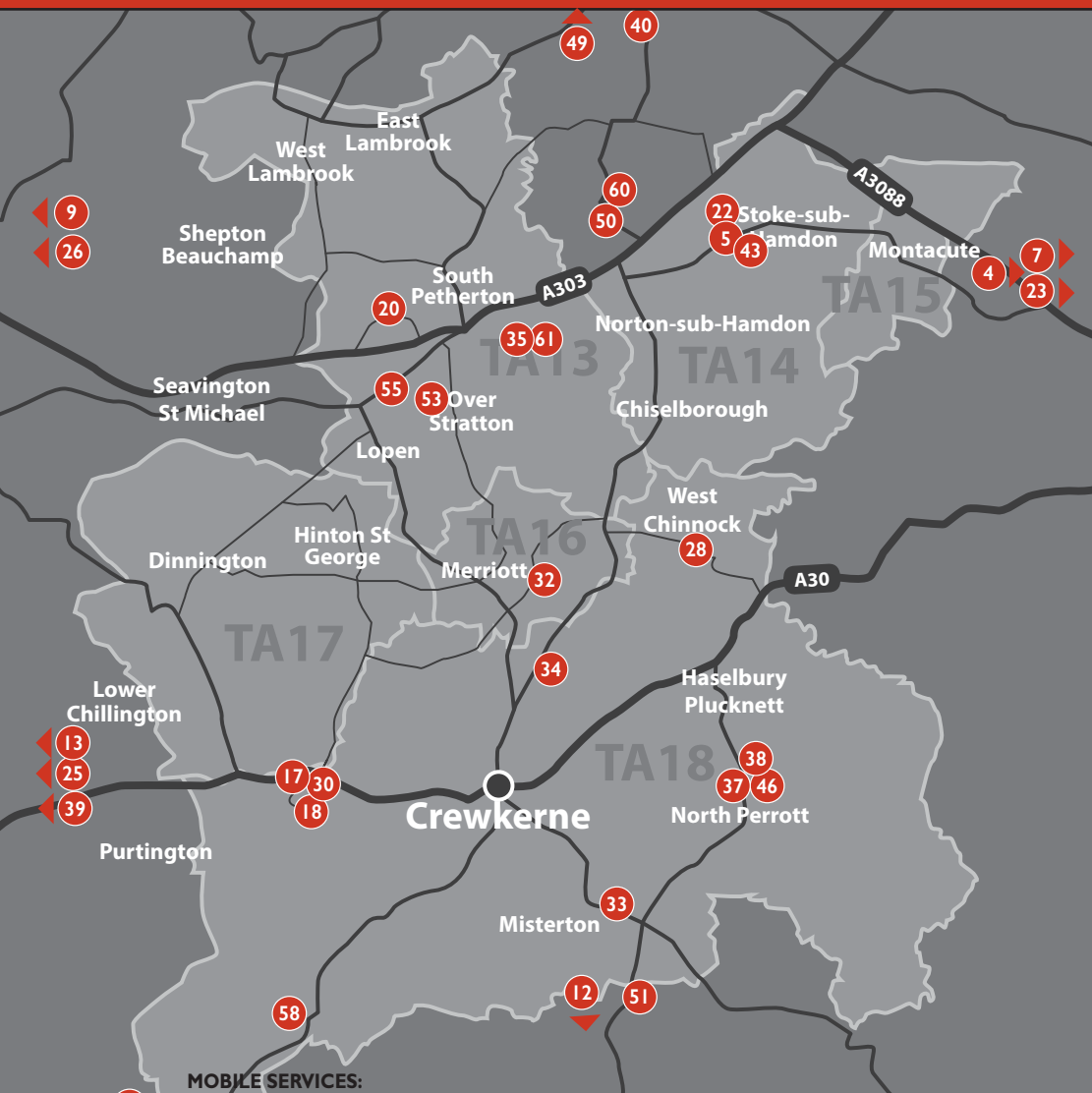
Providing high quality, fresh flowers to Crewkerne and surrounding areas for over 30 years

Tel: (01460) 72584

17, MARKET SQUARE
CREWKERNE, TA18 7LG

www.rodfordstheflorist.co.uk

Interflora
the flower experts



MOBILE SERVICES:

- | | | | |
|----------------------------|-----------------------------|--------------------------------------|---------------------------------------|
| • Able Alex Ltd | • Classic Car Restoration | • Freeway Taxi | • Kellys Cleaning Services |
| • Airline Taxis | • Colour Fence | • George Burgess Painter & Decorator | • Kode Print & Designs |
| • Beale Heating & Building | • Crewkerne House Clearance | • Green Man Dorset | • Libertas Care |
| • Bike Vet | • Crewkerne Taxis | • Home Instead Care | • Loxston Groundcare |
| • Bluebird Care | • Derrick Young - DVSA | • Jim Allen Building | • Marshall James - Garden Development |
| • Care South | | | |

- | | | | |
|------------------------------------|---------------------------------|------------------------------|----------------------------|
| 1. Aistheta | 4. Anytime Fitness | 8. Bilbys Coffee Shop | 12. Clocktower Music |
| 2. Allen Computer Services Ltd | 5. Bacalls Dog Grooming | 9. Busbys Reclamation | 13. CPL Distribution |
| 3. Antiques Bazaar & Crepe Trailer | 6. Ballantine Wealth Management | 10. Carousel Arts and Crafts | 14. Craftwood Timber Gates |
| | 7. Battens Solicitors | 11. Chalmers & Co | 15. Crewkerne Cards |



MOBILE SERVICES:

- | | | |
|-----------------------------|---------------------------|----------------------------|
| • Mollycoddled Pet Services | • Robin Harwood Decorator | • Tricky Dicky Groundworks |
| • Pegasus Pest Control | • Seasoned Hardwood Logs | • Willoway Landscaping |
| • RED Driving School | • Short Stops | • 3D Cleaning |
| • Richards Chimney Sweeping | • The Fencing & Gate Co | |

- | | | | |
|-------------------------------|-------------------------------|----------------------------------|--|
| 16. Crewkerne Garage Services | 28. Little Angels Ironing | 41. Regency Mobility | 53. The Pig Pen |
| 17. Coombe Farm Organic | 29. Little Bears Play Cafe | 42. Robert Frith Opticians | 54. The Squirrel Inn |
| 18. Coombe Farm Engineering | 30. Lower Coombe Garage | 43. Rob Margetts Carpets | 55. The Trading Post |
| 19. Elswood Cleaning Supplies | 31. L.S.G. Plumbing & Heating | 44. Rodfords the Florists | 56. The Veg Shed |
| 20. Eternal Kitchens | 32. Manor Farm | 45. Severalls Jubilee Bowls Club | 57. The Window Man |
| 21. Grand Interiors | 33. Misterton Garage | 46. Southern Conservatories | 58. Wayford Vineyard |
| 22. Hamdon Playgroup | 34. Mrs B's Animal Feeds | 47. Stokes Partners | 59. Widworthy Commercials & Crewkerne Station Garage |
| 23. Helliard and Son Laundry | 35. MST Group | 48. Stuff 2 Store | 60. W.M. Groundcare and Construction |
| 24. JF Cars | 36. My Bestie Petshop | 49. SW Hearing Aid Centre | 61. Yeabridge Farm Storage |
| 25. Just Purdy | 37. NM Graphics | 50. Old Dairy Farm Shop and Café | |
| 26. Kitchen Kind | 38. North Perrott Farm Shop | 51. The Admiral Hood | |
| 27. Lift Fitness | 39. PCS Furnishing Centre | 52. The Burger Shed | |
| | 40. P&P Trade Windows | | |

Crewkerne & District

MUSEUM
&
HERITAGE
CENTRE

There is no doubt that "adaptability" should be added to our title! For the last year we have spent time adapting to the changes in our way of life. Usually, Spring would be a time for preparation and the excitement of a new season at the museum, but this year we await the abatement of the pandemic all the while considering the best way to connect with the public.

We hope that you are enjoying our window displays, each month we will bring to you another aspect of the town's history. Our photograph collection is proving invaluable in displaying stories of various streets in Crewkerne. Our rather sulky looking model will tell her own stories, but there is no doubt life was very different 70 years ago for a young "housewife" – does anyone even call themselves that now!

Those who have sent email enquiries for research will be answered as soon as researchers can return to work. Again, being adaptable, we have changed our exhibition plans for when we can open. Initially we will look at "Food, glorious food". It seems that the topic has featured highly this last year as a welcome relief to the, sometimes, monotonous days. So much has changed about the meals that we eat, how they are cooked, how we process food, preserve it and where it comes from. We will tickle your taste buds with information about these changes over the years since Victorian times.

Our galleries are almost ready for opening with a new display on the architecture of Crewkerne in Gallery 4. We aim to be ready to open when regulations allow. If we are unable to open the whole museum we hope to welcome visitors to our special exhibition, and this year entry will be FREE!

Anyone wishing to join our volunteers can contact us on crewkernemuseum@hotmail.co.uk We welcome new volunteers in all areas of work at the museum.



THE RISKY EXPERIENCE OF 'ORDERING ONLINE' IS NOT YOUR ONLY OPTION!

PRINTED CLOTHING

(The size you need - Not Barbie or Sumo Wrestler for 'Medium')

VEHICLE GRAPHICS & magnets

See priced example of YOUR VAN BEFORE you commit

Fitted or just supplied for DIY FIX.

SIGNBOARDS & WINDOW GRAPHICS

VINYL STICKERS (wipeable)

No min quantity. Ideal for home business

**WE ARE HERE FOR YOU - PLEASE HELP US REMAIN
BY SUPPORTING YOUR LOCAL BUSINESSES**

NM Graphics

01460 77766 / 07547 662393
email nikki@nmgraphics.co.uk

Richards Chimney Sweeping & Stove Installations

- ✓ Chimney Sweeping
- ✓ Stove Installations
- ✓ Fitting/Replacement of Cows
- ✓ CCTV Inspections
- ✓ Chimney Rebuilds/Maintenance



HETAS REGISTERED & FULLY INSURED

Tel Luke: 07984 371757

CARE AND SUPPORT SERVICES AT HOME



At Bluebird Care we offer a range of services. Including: Personal Care, Medication Support, Domestic Help, Companionship and Live-in Care.

Our carers work in small teams, you will always know the person visiting you. If we are ever more than 60 minutes late to you - that visit is FREE.

Call our friendly team today

01935 584184

southsomerset@bluebirdcare.co.uk



CREWKERNE HOUSE CLEARANCE



Get a fast, efficient and thorough service from Crewkerne House Clearance

Operating from 7am to 7pm seven days a week.

With twenty-five years' experience behind us, you can be sure of a safe, reliable and efficient clearance service from Crewkerne House Clearance.

01460 769 20 or 07929 567 313
www.crewkernehouseclearance.co.uk

SEVERALLS JUBILEE BOWLS CLUB

WAR MEMORIAL GROUNDS,
SEVERALLS PARK AVENUE, CREWKERNE TA18 8HQ
(entrance off Lang Road) - with on-site parking



LEARN TO PLAY BOWLS ON A DAY
OF YOUR CHOICE COMMENCING
MONDAY 19TH APRIL

OR COME ALONG TO OUR OPEN DAY
ON MONDAY 31ST MAY 10AM - 4PM
WITH FREE MEMBERSHIP ON THE DAY



TO ARRANGE YOUR FREE SAFE COACHING
PHONE GEOFF ON 01308 867221 / 07849 600366
OR EMAIL geoffkerr47@btinternet.com

HISTORIC LINKS OF GLOVE MAKING WITH CREWKERNE OF FAMILY BUSINESS STILL THRIVING TODAY

A South Somerset family business, which has been making gloves for over 170 years, has strong links with Crewkerne. Southcombe Gloves based in Stoke sub Hamdon is a fifth generation owned business. The business was started by Richard Southcombe, who was born in 1824 at Sheepwash near Torrington in North Devon. When he was around the age of fifteen, Richard came to live in Somerset and is recorded in the 1841 census residing with his aunt Mary and uncle Joseph Guppy, who ran a drapery shop in Stoke sub Hamdon.

The hamstone village near the Fosse Way was a staging post for horse-drawn carriages travelling along the Bath to Exeter road and gloves were in high demand by the coachmen. The young

entrepreneur seized the opportunity and began manufacturing fabric gloves in 1847. By the mid 1860's the Southcombe factory was producing '36,000 pairs of gloves' each week. To cope with the expanding demand and the manufacturing of 'more durable and refined leather gloves', a new main factory was built in 1873 at Cole Lane.

In Victorian times, gloves were hand-sewn, with a large cottage industry of women working from home. According to a report by Dr Stewart for the Children's Employment Commission in 1841, young girls were taken on as apprentices to glove mistresses from the age of seven and after six months of learning the craft were paid 6d a week, increased to

1s a week after a further six months and thereafter paid 1d per pair. Another fact about the gloving industry, which helped to produce more accurate stitching, was the creation of the Gloving Donkey. This foot operated device which held the glove



firmly in place was invented by James Winter of Stoke sub Hamdon in 1807.

Crewkerne's link to the glove making industry can be found in historic records, archived at Crewkerne & District Museum & Heritage Centre. In the 1851 census, records show that there were around 140 glovers in the town, who were mainly female out-workers. The former Southcombe glove factory off of North Street closed in 1998 when the business was transferred back to Stoke sub Hamdon. It is now residential flats known as Gouldsbrook View but retains its original 19th Century architecture. A further link to the Southcombe family in Crewkerne is the hamstone plinth, built into the front wall of the Baptist Chapel in North Street, which commemorates its 200 year history and was laid by Richard Southcombe Esq of Stoke sub Hamdon in July 1880.



The former Southcombe Glove factory at Gouldsbrook View in Crewkerne, which was run by relatives of Richard Southcombe Snr and employed local men and women. The factory closed in 1998 and was later converted into flats but still retains its 19th Century architecture.



"The original 19th century factory complex in Coles Lane, Stoke sub Hamdon"

By Ana Collingridge ©

SOUTH WEST HEARING CARE

Helping you to hear your family and friends like never before...

**Home Visits Available.
P.P.E. Provided**

**Hearing
Assessments and
Hearing Aid Fitting**

**Hearing Aid
Servicing and
Repairs**

South West Hearing Care, 7 The Bayliss Centre, High Street, Street, BA16 OEX

T:01458 55 55 33

E:enquiries@swhearingcare.co.uk

W:www.swhearingcare.co.uk

 **PEGASUS
PEST CONTROL**



Including wasps, rats, mice, moths, moles, cluster flies, squirrels, ants, fleas, lady birds, stored product insects

Qualified through the British Pest Control Association since 2004 and Fully Insured

We cover Residential, Commercial and Agricultural Pests

Call Orlando Jackson on 01458 252551 or 07519 118856

www.pegasuspestcontrol.co.uk
info@pegasuspestcontrol.co.uk



Get in contact for a FREE taster session to one of our exclusive LIFT functional fitness classes.



Coached Classes

Personal Training



3-5 South St, Crewkerne. 07341662027

Lee Donohoe
**DRIVING
INSTRUCTOR**



Covering Yeovil & Surrounding Area

Phone or text: 07850 255 586

Email: drive.instructor@yahoo.com

Like & follow me  @Lee Donohoe

THE FENCING & GATE COMPANY

Domestic fencing specialist
Over 30 years experience
Free survey and quotation
10 year guarantee
No VAT

01935 330 095
01460 353 046



North Perrott Farm Shop

Toward a Sustainable Rural Economy

Open 7 days 9am - 5.30pm (Sun 4.30pm)
Lunches Mon to Sat 12am - 2pm TA18 7SS
www.parrettbrand.co.uk Tel. 01460 77090

 **STOKES
PARTNERS**
SOLICITORS

Specialist legal advisers

Providing a professional personal service

- > Buying & selling your home
- > Commercial property
- > Divorce, cohabitation & separation
- > Agricultural law expertise
- > Wills, tax & probate
- > Contract disputes
- > Employment advice
- > Business related issues
- > Corporation transactions
- > Dispute resolution
- > Business restructuring
- > Issues concerning children
- > Landlord & tenant

www.stokespartners.co.uk
Crewkerne, Somerset | 01460 279 279

“ I am glad I have you guys on my side ”



A HAPPY CLIENT



Furringdons Farm, Broadshard, Crewkerne. TA18 7NJ



FIND US ON FACEBOOK
@MRSBANIMALFEEDS

HORSE, PET & ANIMAL FEEDS

HORSE TREAT PICK N MIX
AVAILABLE IN 20 FLAVOURS
WEIGH YOUR OWN BIRD SEED

LOCAL DELIVERY AVAILABLE

**OPENING
HOURS**

MON-FRI: 8AM - 5PM SAT: 8AM - 4PM

SUN: CLOSED



01460 73613

www.mrsbanimalfeeds.wixsite.com/mrsb

CREWKERNE TAXIS & C & S TAXIS

Providing a friendly and reliable service to Crewkerne and surrounding areas.

*Shopping Trips to Nights Out,
Prescription Collections or Picking up
Chinese takeaway, School Runs and Airport
Trips - Booking advisable*

Like & follow us [f](#)@CrewkerneTaxis

01460 75088
OR
01460 279700

Loxston GROUNDCARE

*Specialists in Grass and
Scrub Cutting Equipment*

www.loxston.co.uk
www.irus-mowers.co.uk

New Road, Seavington St
Mary, Ilminster TA19 0QU

01460 242562

Click & Collect or
Delivery available

COOMBE FARM ORGANIC

We produce delicious Soil Association certified meat on our beautiful estate just outside of Crewkerne. All of our award-winning meat, from our grass-fed beef and lamb, to our free-range pork and chicken, is locally produced and slaughtered, skillfully butchered and full of flavour.

Order online at coombefarmorganic.co.uk



Find us: Coombe Farm Organic, Roundham, Crewkerne TA18 8RR - Click & Collect available Tues - Fri, 12 - 4pm
Tel: 01460 279509 - Email: hello@coombefarmorganic.co.uk



LOWER
COOMBE
GARAGE



*MOTs, Tyres, Brakes, Clutches,
Servicing, Repairs, Diagnostics,
Exhausts, Air Conditioning,
Engine Carbon Cleaning & much more!*

Situated at Coombe Farm just off the A30 between Crewkerne & Chard. Lower Coombe Garage is a servicing and repairs workshop, specialising in all car makes and models, plus light commercial vehicles.

We are a registered MOT centre, with a new built for purpose premises, 3 state of the art vehicle bays, 5 mechanics and stacks of parking space on site. We have courtesy cars that can be pre-booked, or if its just a quick tyre change required, you can grab a coffee in our indoor and outdoor seated waiting areas.

Like & follow us [f](#)@LowerCoombeGarage

T: 01460 279578 E: lcg@lcgarage.co.uk
www.lcgarage.co.uk

Lower Coombe Garage, Coombe Farm,
Crewkerne, Somerset, TA18 8RL

ROBIN HARWOOD

PAINTER AND DECORATOR

LIMEWASHING, DISTEMPER,
TRADITIONAL AND NEW PAINTING,
WALLPAPERING AND
GENERAL REPAIRS

QUALIFIED CHERRY PICKER LICENSE

ALL ASPECTS OF PAINTING
AND DECORATING

PROFFESIONAL AND
FRIENDLY SERVICE



TEL: 01460 76991
MOB: 07967 014855
robinharwood@sky.com
FREE ESTIMATES

L.S.G PLUMBING & HEATING

Parkfield, Station Road, Crewkerne, Somerset

**All Plumbing & Heating
Works Under Taken**

No Job Too Small

Free Estimates

Fully Qualified & Insured

TEL: 07496 345043

Find us on
[facebook](#)



Installing, Servicing & Breakdowns

- Boilers
- Bathrooms
- Kitchens
- Upgrades
- Gas Safety Reports
- Maintenance
- Underfloor Heating
- Unvented Hot Water

You've bought an old car. A classic car, historic car, and you are smitten. - **I know.**

I did it over 60 years ago, and despite a life of motor racing, which I still do, and countless vehicles restored for others, you'd think I'd had enough.

I tried to run away from my addiction 42 years ago and came here, but soon an old race car that I'd paid 40 quid for and left behind, appeared on my doorstep.

I cried, my attempt at cold turkey failed. I was an addict again.

No, dear addicts, I need my daily fix, and have owned a GT40, Cobra, Ferrari, and countless others before their values reached stupid proportions. I still buy my fixes and at 80 years of age it gets no easier.

We only repair the gems with plugs and points.

But, as I said, its an addiction. A life time addiction.

It will drain your resources, isolate you from your friends.

In bad cases, divorce can result.

So please, Please don't get addicted to the old car, especially, MG, Jowett, Triumph, Jaguar, Ford.

Please don't..... But if you do, Barrie, Alan, Stella and Seb are on **01308 868884**



Barrie Carter & Alan Bartlett Classic & Vintage Car Restoration



Experts in Pre & Post War MG's & All Classics
60 Years of Vintage Restoration before they were Vintage!

See Alan's Award winning Jowetts
& Barrie's Different TC

- XPAG Engine Rebuilds
- Carburettor Rebuilds
- Gearbox Rebuilds
- Anything on any Engine
- Unleaded Head Conversions
- Chassis Up Restorations

Servicing
T Type Spares Bought & Sold
Racing Preparations
Collection & Delivery Anywhere in Europe
Advice, Anecdotes and Catastrophes

barriecartermg.com
01308 868884 | 07885 768830

Exceptional Local Launderers

Domestic and Commercial Laundry for...

- Private Households
 - B&Bs
 - Holiday Lets
 - Inns, Pubs & Hotels
- Pristine laundry every time...
Helliar Laundry Services
Units 15/16, The Parade Ground
Lufton Trading Estate
Yeovil, Somerset, BA22 8HZ

Collection & Delivery available
Also, good customer parking

Tel: 01935 477747



www.helliarlaundryservices.com • info@helliarlaundryservices.com

KITCHENS & FURNITURE HANDCRAFTED IN SOMERSET



The Old Yard, Logge Farm, West Street, South Petherton TA13 5DJ
T: 01460 241261 | www.eternalkitchens.co.uk

Just Purdy

PAINT YOUR OWN POTTERY
& CRAFTING CENTRE

WE HAVE MOVED TO A LARGER STUDIO

UNIT 6 CRIMCHARD BUSINESS CENTRE,
CHARD TA20 1JT - FREE PARKING ON SITE

CHOOSE FROM OUR GREAT RANGE OF
READY MADE POTTERY

BOOKING ESSENTIAL,
ALSO TAKEAWAY PACKAGES AVAILABLE
ALONG WITH FREE LOCAL DELIVERY

COMING SOON! WORKSHOPS IN
PYROGRAPHY, PAINT POURING,
FOLK ART, SEWING ETC

BIRTHDAY PARTIES
GROUPS FOR ADULTS AND CHILDREN
ON OR OFF SITE



SEE YOU SOON!
TEL: 07713 804 784



AIRLINE TAXIS

SOUTH SOMERSET AREA

CREWKERNE [01460] 75089
YEOVIL [01935] 414444

MERRIOTTSFORD MINIBUS
CREWKERNE [01460] 76029

Local & Long Distance
All Sea & Airports
Crewkerne & Yeovil

RAILWAY STATION SPECIALISTS

4, 6, 8 & 16 SEATERS

Email: taxialliance@outlook.com

DRIVERS WANTED - All Hours Available!

LITTLE ANGELS IRONING SERVICE

Fast friendly collection & delivery service
Quality ironing at a price you can afford
Domestic & business ironing

All ironing is fully insured and carried out by hand
in our purpose built, clean, odour free unit.

01935 881127 07941 853739

www.little-angels-ironing.com

Rob Margetts

CARPETS AND FLOORING LTD

OVER 30 YEARS EXPERIENCE

Carpets · Vinyls · Laminate Wood
Karndean · Wooden · Safety Floors
Furniture Moved · Samples Brought To Your Home

Tel: 01935 825 505
Mob: 07970 821 097

Email: sales@rmcarpets.co.uk



WWW.RMCARPETS.CO.UK

2 HIGH STREET | STOKE-SUB-HAMDON | SOMERSET | TA14 6PP

THE SQUIRREL INN

Visit Our Warm & Welcoming Pub in Chard, Somerset

WE ARE MAKING OUR PUB SAFE FOR ALL; WITH SOCIAL DISTANCING MEASURES AND A ONE-WAY SYSTEM IN PLACE, THERE ARE HAND SANITISERS THROUGHOUT AND OUTSIDE SEATING IF YOU WISH



As things are changing all the time, please ring with your enquiries...

BAR SNACKS, FILLED ROLLS, SANDWICHES & HOT PASTIES

Bargain steak night every Wednesday – 5pm – 9.30pm
20% off steaks every Wednesday!

Burger & pizza night on Fridays.
20% off burger and pizza menu every Friday!

LIKE AND FOLLOW US ON FACEBOOK @SQUIRRELINN FOR THEME NIGHT DATES AND TIMES




HOLIDAY LODGE NOW AVAILABLE TO BOOK

CAMPERS WELCOME

Basic camping only



Disability access throughout the pub - Disabled toilet - Access ramp into beer garden

PHOTOS & MORE INFO ON THE NEW FACEBOOK PAGE!

Telephone: 01460 30298 Email: squirrelinn1@btconnect.com Facebook: @squirrelinn
LAYMORE | WINSHAM | CHARD | SOMERSET | TA20 4NT

Marshall James Garden Development has been established for over 34 years, specialising in working with domestic clients. Our philosophy is that your garden is an extension to your home - another room, and therefore just as important.

Experience over the years has enabled us to now provide our own in-house design service, where we blend our ideas with the individual aspirations of our customers.

We have competed twice at Chelsea with the designer Nick Williams-Ellis. Our Jurassic Coastal Garden won a Silver medal and the Edible Playground Garden won a Gold medal as well as the best Courtyard Garden in show.

We offer a full horticultural service, from design, hard and soft landscaping and specialist maintenance.

Please contact us if we can help you with your next garden project.

David James

*Chelsea Flower Show:
Gold Medal Winners*

HIGHLY EXPERIENCED
AND PROFESSIONAL HORTICULTURISTS

Marshall-James

Garden Development Ltd



*The Design, Construction
& Maintenance of
Beautiful Gardens*

South End | Tunnel Road | Beaminstor | Dorset | DT8 3HB

Telephone 01308 863398

www.marshalljamesgd.co.uk

MANOR FARM'S OWN!

WE NOW HAVE AN OUTDOOR FARM CABIN FOR EASY SOCIAL DISTANCING!

We still have fresh veg & fruit, as well as plants, free range eggs, apple juice, cottage style flowers, local honey, jams & chutneys! If you want a variety of fresh produce come & visit our small rural farm cabin!

Manor Farm, Merriott, Somerset TA16 5NP • Tel: 01460 72797
Email: manorfarmsown@gmail.com @manorfarmsownmerriott

GEORGE BURGESS

Interior & Exterior
Painting & Decorating Specialist
Paper Hanging - Tiling
Property Maintenance
FREE ESTIMATES

Over 35 years experience - No VAT

18 Higher Beadon,
Merriott, Somerset

Mobile: 07866 866 833
Crewkerne: 01460 76788

VINYL RECORDS BOUGHT & SOLD

01308 458077

thecrew@clocktowermusic.co.uk

OPEN 10 TILL 5
WEDNESDAY TO SATURDAY

ST MICHAELS ESTATE, BRIDPORT, DT6 3RR
clocktowermusic.co.uk



KELLY'S CLEANING

DOMESTIC &
COMMERCIAL CLEANING

07454 317508

kellylock1@hotmail.co.uk

SPACE4CREWKERNE - SAFE PEDESTRIAN AND CYCLING ENVIRONMENTS

Winter may have been a quiet time, but SPACE for Crewkerne has not gone into hibernation! We are still waiting for news on the application to Somerset County Council for funding to facilitate Electric car hire and the Air Quality Monitor set up in town, but we are engaging with other areas. Crewkerne Town Council await training to use the Speed Indicator Device that they now have.

Our recent energies have been applied to checking the various planning applications relating to Crewkerne. The access for the CLR site onto Station Road and indication that 8 trees should be felled has given many concerns. Much about this application is unsatisfactory – tree felling, provision of segregated cycle track, site and method of access to site using traffic lights, making access to existing properties on Station Road difficult.

Planning applications often paint a picture of Crewkerne which portray a vision of somewhere that does not appear to match with reality. Take a look at the Goldwell Farm application no. 20/03708/OUT on SSDC planning portal, Traffic assessment. According to the plan Crewkerne has Cycle tracks, good provision for pedestrians to access the town and a good bus service, where we know that this is not the case.

We have a "vision" for Crewkerne as a safe place for all to move around, in

whatever way they choose, so we will continue to check planning proposals and ask you to do likewise. If you are not happy with proposals, make a comment on the SSDC Planning portal (it takes a little patience to get into it!), contact Crewkerne Town Council to comment and keep your eyes open! Crewkerne Town Council have agreed to discuss the Goldwell Farm plan at their meeting in March.

You can contact us on our Facebook page with ideas and comments, on space4crewkerne@hotmail.com. The aim is to be positive and constructive all the while encouraging the councils to look at the best way forward to make Crewkerne safer for all.



Tricky Dicky GROUNDWORKS



Resin Driveways
Brick Paver Driveways
Patio's and Paths

07968 648 903
07522 605 455



**Mollycoddled
Pet Services**

Dog Walking, Pet Sitting
and small animal visits

Call or message Molly on **07397 985112**
or email: **syimesmolly08@gmail.com**



Local to Crewkerne

 FOLLOW US ON SOCIAL MEDIA 



Formerly **BROADOAK MOTORS**

**Same Team, Same Place
Same Great Service**



**MOTs, Servicing, Repairs, Diagnostics,
Electric, Hybrid, Air Conditioning**

**Unit 4, Crewkerne Business Park
Crewkerne, TA18 7HJ**

01460 78986

• The Speedwell Hall •

Photographic Exhibition and other developments.

The newly refurbished Speedwell Hall has now been further enhanced by a collection of stunning local photographs which are displayed around the walls.

Jeff Hutson, a highly talented amateur photographer who lives in Crewkerne has put together a collection of photos of both local landscapes in all seasons, scenes from some of the more hid-den corners of Crewkerne and portraits of local artisans and producers of foods and drinks. The photos are on permanent display for users of the Hall and visitors to enjoy. They are also availa-ble to purchase and the net proceeds will be donated to The Speedwell Hall funds.

We plan, when allowed, to hold an Open Day at the Speedwell Hall. It will offer the chance to visit and view the updates to the Hall and the pictures described above as well as meet others and enjoy a cup of tea or coffee.

We have an annual Concert in the Garden at The Speedwell and this will be on 26th June this year. Details of the

line up of singers and performers will be available nearer to the time.

Another new development will be The Little Bears Play Cafe which will be held at the Hall each week on Tuesdays and Wednesdays. Again the start date for this will be announced as soon as we are able.

So when the Hall eventually reopens as conditions allow, please be sure to visit us at the Speedwell Hall, a valuable asset to the Crewkerne Community.

(Two examples of Jeff's photographs are shown below.)

The Speedwell Liz Dennis



Bacall's Dog Grooming

Fully qualified dog groomer

Lauren Knight

Unit 1, Hamdon House, North Street, Stoke Sub-Hamdon, TA14 6QP

Call or Text: 07759 892827

Bacall's Dog Grooming

Jim Allen

Building Services & Roofing Contractor

- New Builds / Massonary
- Blockwork Rendering
- Re-roofs / Repairs
- Carpentry & Maintenance
- UPVC / Guttering

alljm996.aol.com

www.jimallenbuilding.co.uk

01308 863809 | 07976 372045

OPENING MAY 2021

FABULOUS SOFTPLAY GYM FOR THE UNDER 5S

at the Speedwell Hall Crewkerne

Every Tuesday & Wednesday 9am to 4pm

Very warm and comfortable for parents
Fresh food served all day

ADMISSION £3 PER CHILD

Find us on Facebook
Little Bears Softplay

julia.henry999@gmail.com

Call Julia 07824 115889

WILLOWAY
LANDSCAPING SERVICES

HIGH QUALITY, GOOD VALUE FOR MONEY & RELIABLE

GRASS CUTTING
GENERAL GROUNDS MAINTENANCE
HARD AND SOFT LANDSCAPING AND TURFING
FENCING - SITE CLEARANCE - TREE SERVICES
WINTER GRITTING AND SNOW CLEARANCE

EMERGENCY CALL OUT
CALL: 01460 247 161
EMAIL: INFO@WILLOWAYLS.CO.UK
WWW.WILLOWAYLS.CO.UK

BEALE HEATING & BUILDING LTD

BUILDING WORKS, CENTRAL HEATING & PLUMBING

ALL BUILDING WORKS, EXTENSIONS, KITCHENS, BATHROOMS, EN-SUITE ADAPTIONS, BOILER INSTALLATIONS

CALL THE EXPERTS NOW
Kevin & Steve Beale
01460 240 519

REG NO 13631

Libertas Care

HIGHLY RATED
South West Care Agency
homecare.co.uk
★★★★★

"With the support of Libertas Mum's life has been completely transformed."
Mr Brinson

Providing high quality home care in & around Crewkerne

LIVE-IN CARE
One-to-one care in your own home. A full personal service where a carer/companions time is devoted solely to your comfort and needs.

DOMICILIARY CARE
Daily visits to help with your personal needs, medication assistance, meal preparation, domestic tasks and shopping. Overnight services available.

SOCIAL SUPPORT
Visits of two-hour duration or more to provide a mix of personal care, domestic tasks, escorted outings and companionship.

Always caring, always with a smile

libertas-care.co.uk • 01460 78726
admin@libertas-care.co.uk



ROBERT FRITH

OPTOMETRISTS

We were proud to remain open for emergency eye care throughout lockdown, and are now open again for routine eye care and hearing assessments.

Providing outstanding eyecare for the whole family including the latest 3D eye scanning technology.

High quality eye wear including specialist lenses for your profession, sport or hobby, contact lenses and sunglasses.

4 Market Street, Crewkerne, Somerset, TA18 7JY

Tel: 01460 72964

Email: crewkerne@frithsopticians.co.uk



www.frithsopticians.co.uk



Bilbys Coffee Shop

Coffee Shop • Tea Room • Family Run Restaurant

Tel: 01460 72622

Visit us at: www.bilbys.co.uk or email: info@bilbys.co.uk

Like & follow us @Bilbys

Open now... at Bilbys


Pop in or order online at:
theburgershed.eat-me.online

or call:

01460 72622

www.theburgershed.co.uk



The  **Burger Shed**
@Bilbys

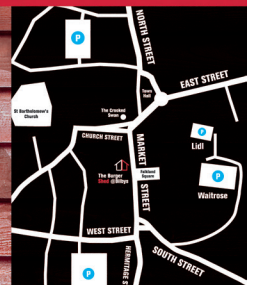
Crewkerne's
1st burger bar.

Handmade and
cooked to order.

It's a short wait for a
Shed load of flavour!

Opening times
Tuesday to Saturday
4.30pm - 10pm

The Burger Shed @ Bilbys,
6 Market Street, Crewkerne TA18 7JY



THE 1:1 DIET

As recommended by Liz Popham
Your local 1:1 Diet consultant

"OLD" CREWKERNE

Photos kindly supplied
by David Bryant.



Outside George Hotel Service Bus
advertising Crewkerne Furniture
Emporium. Lloyds Bank, Shops in
background Paws, Claws and Jaws
(pet Shop) & John Stoodley
Furniture Shop & Undertakers



Crewkerne Station
Battle of Britain Class 34083
(605 Squadron)



Co-op Shop Market St 1950's
Mr Edward Wadsworth was the
manager and he live above the
shop with wife Margaret and
daughter Jean.
Maurice Hewins clothes
department on left. Cyril Brent
Grocery in the centre, on the
right Butchers Shop Dick Pitman
& Cecil Lawrence. Between
Clothes dept and Grocery an
arcade to Furniture Department
upstairs and Mr Trott Funeral
dept. Later they had the shop
next door for Furniture and
Funerals Jack Addy



Miss Christophers Picture shop
1940's North St With Elsie Thompson

✓ Yale Security
Hardware Available

✓ Credit and Debit
Cards Accepted

✓ 10 Year Insurance
Backed Warranty

the

✓ First Class
Customer Service

Energy efficient, double glazed
windows, doors & conservatories!

WindowMan
WINDOWS, DOORS & CONSERVATORIES

Composite Doors



Glass Roof Conservatories



PVCu Windows



Aluminium Bi-folding doors



Solid Roof Conservatories



the TRADE NOW OPEN
WindowMan
WINDOWS, DOORS & CONSERVATORIES



Dorset: 01305 780044
Somerset: 01460 200666

www.somersetdoubleglazing.co.uk

Units 8-9 Luffton Heights
Commerce Park, Boundary
Way, Yeovil BA22 8UY

16 South Street
Crewkerne, Somerset
TA18 8DA

CERTASS
Quality Assured

SUDOKU 1

8	3	5						
4				8				7
	2				1			9
	7	3	8				1	
6		1				9		5
	5				7	8	2	
3			1				4	
5				7				1
						7	5	6

copyright © 2021 by WWW.SUDOKU129.COM

Level: Easy

Date: _____

Start time: _____

Time to solve: _____

SUDOKU 2

		1			2		6	
5			7		9			
				3		7		
			5				4	8
	1	5	6		4	2	7	
8	4				3			
		3		9				
			1		7			2
	7		3			6		

copyright © 2021 by WWW.SUDOKU129.COM

Level: Evil

Date: _____

Start time: _____

Time to solve: _____

NOW MAY BE A GREAT TIME TO PROMOTE YOUR BUSINESS.

The Crewkerne Flyer has fast become the best advertising medium for Crewkerne and The Hamstone Villages. We distribute via Royal Mail to every business and private address in TA13, TA14, TA15, TA16, TA17 and TA18. That is over 10,600 addresses. We cover an area from Montacute to Dinington, and from Clapton to East Lambrook.

We publish 4 times a year – Summer, Autumn, Winter and Spring.

Our next edition for Summer 2021 will be distributed week commencing Monday 5th July 2021.

BOOKING DEADLINE 4th June 2021.

To book your space please call Andy Munckton on **07823 346666** or email theflyerpublications@gmail.com.

Adverts start from £40 + VAT.

SUDOKU ANSWERS:

5	6	9	8	7	6	2	7	1
2	8	7	9	1	8	5	6	
7	8	1	5	6	2	8	9	7
9	1	5	8	2	6	7	7	8
6	7	2	7	8	9	5	1	8
8	7	8	1	7	5	6	2	9
1	5	7	9	8	8	7	6	2
7	2	8	6	1	7	9	8	5
8	9	6	2	5	7	1	8	7

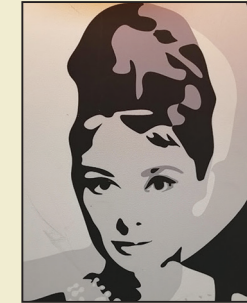
7 noxans

1 noxans

Antiques Bazaar

A Great Centre for Antiques and Collectables

OVER 75 TRADERS AT ONE LARGE VENUE - TRADING 7 DAYS A WEEK - FREE PARKING



The Old Textile Mill, South Street, Crewkerne. TA18 8AG

Tel: 01460 77121

Find us on Facebook: Antiques Bazaar

www.antiquesbazaar.co.uk



Local • Organic • Fresh

🍷 Deli Counter

🍷 Toiletries & Home Corner

🍷 Zero Waste Refill Room

🍷 Overflow Car Park

🍷 Over 80 Local Producers

🍷 Local Handcrafted Gifts

come&visit

The Old A303, Lopenhead TA13 5JH

01460 241666

TradingPostFarmShop.co.uk

Follow us



[tradingpostfarmshop](https://www.facebook.com/tradingpostfarmshop)



[trading_Post_TP](https://twitter.com/trading_Post_TP)

A NEW BUILD SUCCESS STORY

A new build success story in midst of a global pandemic. Kitchen Kind have helped this family to truly make their kitchen 'the heart of the home'...

How Paul & Erica achieved their dream home



The house itself was designed by their friend and architect David Drummond of Drummonds architecture in his signature style. Using modern building methods such as the SIPS structure, clad in Siberian Larch and local limestone walls on the ground floor, large aluminium windows and doors and detail in anthracite grey, a sleek and modern look has been achieved, and a light filled living area has been created.



and downs during the build. The torrential rain at the beginning and ends of the build making the clay ground impenetrable. There were hurdles to overcome with landowners, water, and electricity companies. But those hitches aside, there were wonderful highlights one of which was undoubtedly when they saw their new kitchen installed and for the first time the building site began to resemble a home. Being able to envisage themselves in their kitchen gave them a glimmer of what family life would become once the project was finished.

For Paul and Erica, the kitchen is the hub of their busy home. The kitchen is a hive of activity in their family life and a space where they love to entertain. They knew they wanted a big island with seating incorporated in the design of the kitchen as a fun feature for the children and as a focal point when entertaining friends, allowing them to socialise whilst cooking at the same time.

In their own words, Paul and Erica chose Kitchen Kind based on the personal service and range of great quality products at incredibly competitive prices. For them it was a no-brainer. They visited the Kitchen Kind showroom and met Becca and John and there they got to touch and looked at all the products. They felt they were in safe hands.



Kitchen Kind

Transforming the one you have, to one you love ❤️



With over 25 years experience in the kitchen industry offering a quality service.

- Granite Quartz Worktops
- Replacement Doors
- Complete New Kitchens
- Top Brand Appliances
- Kitchen Alterations
- Sinks & Taps
- Design Consultation.

www.kitchenkind.co.uk
Unit 30 Ilton Business Park
Ilminster
TA19 9DU
01935 250 310





A WEALTH OF EXPERTISE ON YOUR DOORSTEP

We provide a highly personalised and comprehensive Wealth Management Service. Our Ethos is to build long term, trusted relationships with individuals, families and business owners.

Together, we would create a working plan, providing you with a clear direction for meeting your financial goals.

We have the experience to help you successfully secure and enhance your financial future by offering specialist advice in a range of areas:

- Retirement Planning
- Inheritance Tax Mitigation
- Small and Medium Enterprises (SME's)
- Investment Planning

For further information, or to request a no obligation initial meeting, please contact us.



BALLANTINE
WEALTH MANAGEMENT

T: 01460 208448 | M: 07904 551973
E: leighton.ballantine@sjpp.co.uk | W: www.ballantinewm.co.uk
29 Market Square, Crewkerne, TA18 7LP

Ballantine Wealth Management is an Appointed Representative of and represents only St. James's Place Wealth Management plc (which is authorised and regulated by the Financial Conduct Authority) for the purpose of advising solely on the Group's wealth management products and services, more details of which are set out on the Group's website www.sjp.co.uk/products.

Ballantine Wealth Management is a trading name of Ballantine Wealth Management Ltd.