

GRATIS

The

CREWKERNE

Flyer

WINTER 2023

THE FREE AREA GUIDE FOR CREWKERNE AND THE HAMSTONE VILLAGES
PRODUCED QUARTERLY: WINTER • SPRING • SUMMER • AUTUMN

LOCAL NEWS & PHOTOS
REGULAR CONTRIBUTORS
LOCAL BUSINESSES &
SERVICE PROVIDERS
LOCAL TOWN &
AREA MAPS

www.thecrewkerneflyer.co.uk



Henry Bowers Workshops,
Furnham Road, Chard, TA20 1AX

**FOR FANTASTIC SAVINGS
on Carpets and Beds**
Now's the time to visit PCS

www.pcscarpets.co.uk  Tel: 01460 61717

SALE
NOW ON





Our first home in Market Street



Our current home on Station Road

PART OF THE CREWKERNE COMMUNITY SINCE 1973

IQD began in a small Market Street office in 1973 trading in quartz crystal components for UK and global electronics manufacturers. Growing and relocating within the community for 50 years, IQD now employs 60 people across the business including product design and testing, purchasing and logistics, sales and marketing.

So if you ever wondered what we do... our components are probably in most of the electronic devices in your home today, as well as being used in global information transfer systems; from your smart watch and your electricity meter, your car's central-locking system, to the mobile masts and satellites transmitting your text messages.



T: 01460 270200
info@IQDfrequencyproducts.com
www.IQDfrequencyproducts.com



IQD Frequency Products Ltd, Station Road, Crewkerne, Somerset TA18 8AR, UK



**WOW! Where has the year gone?
Welcome to our Winter 2023 edition
of The Crewkerne Flyer!**

We really hope that you like our new front cover photo. Do you recognise the building? It is The Mill House at Clapton, built in 1880, directly opposite the main mill building.

The Lockyer family moved from Sandford Orcas to Clapton in 1869 renting the mill, until they bought it in 1901. John Lockyer – 5th generation of the Lockyer family - still lives in The Mill House, the family having sold the mill in 1995.

Looking to the future, please see our article on **Pages 14 & 15**. Space for Crewkerne are campaigning for a “green corridor” to be created between Crewkerne town centre and the new Key Site residential development, being carried out by Taylor Wimpey.

Crewkerne in Bloom fulfil an important role in making the town attractive. Their report is on **Page 18**.

The work of Crewkerne Local Information Centre is a vital interface between local businesses and attractions, and the numerous visitors to our area. Please learn more about the LIC on **Page 32**. Another stalwart operation in Crewkerne is the Museum and Heritage Centre, with an article on **Page 42**.

Finally our regular contributor David Bryant has sent us more photos of “Old Crewkerne”, on **Pages 46 & 47**.

The Crewkerne Flyer is again full of local businesses and service providers. Please support them; your pounds in their pocket will find its way into other local businesses, and soon contribute to sustaining a healthy local economy.

With best wishes for Christmas and the New Year.

Anthony Bucke. Editor.

Email crewkerne@theantiquetourist.com
18 October 2023



"Crewkerne Fair 2023. Photo credits to Nic and Malc Hodder".

**f PLEASE LIKE US AND FOLLOW US
@TheCrewkerneFlyer**

Disclaimer: The Crewkerne Flyer is published by The Flyer Publications Ltd, The Old Textile Mill, South Street, Crewkerne, TA18 8AG. Whilst every effort is made to ensure accuracy, no liability is accepted by the publishers for inaccuracies or omissions in the content of The Crewkerne Flyer. This publication is distributed free of charge in the TA13, 14, 15, 16, 17 and 18 postcodes. If you would like your own free copy, please contact the publishers with the above contacts.

No content of the publication may be reproduced without the written consent of the publishers.

Copyright: The Crewkerne Flyer 2023.

INDEX WINTER 2023

Able Alex	Page 13
AHM Installations	Page 11
Air BNB	Page 22
Aistheta Skin Clinic	Page 41
Allen Computer Services Ltd	Page 5
Angel Carers	Page 25
Antiques Bazaar	Page 49
Ashlands Gardens	Page 31
Atkins Auctions	Page 30
Auto Refurbs	Page 29
Barnstore Yeabridge	Page 23
Beale Heating & Building Ltd	Page 47
Bike Vet	Page 35
Bridport Auction House	Page 33
C Thru Cleaning	Page 13
Carbin Heating Ltd	Page 52
Carousel	Page 37
Chalmers & Co	Page 11
Classic Car Restoration	Page 13
Colour Fence	Page 6
Crewkerne Garage Services	Page 44
Crewkerne House Clearance	Page 35
Crewkerne Rubbish & Waste Services	Page 9
Crewkerne Small Business Centre	Page 29
Crewkerne Taxis	Page 19
Cricket St. Thomas	Page 41
Ear Wax Removal Solutions	Page 30
EGF Carpets & Vinyls	Page 47
Elswood Cleaning Supplies	Page 5
Every's Solicitors	Page 33
FMS & Co	Page 9
Fred Davies - Quality Joinery	Page 35
George Burgess Painter & Decorator	Page 7
G.O.T. Decorating	Page 22
Halstock Sheds	Page 20
Hamstone Vets	Page 40
H.R. Hodge	Page 22
Hollies Unisex Salon	Page 35
Homefire	Page 50
IQD Frequency Products	Page 2
JF Auto Repairs Ltd / JF Cars	Page 36+37
Jim Allen Building	Page 35
Kerry's Quality Food	Page 19
Kitchen Kind	Page 9
L.S.G. Plumbing & Heating	Page 19
Libertas Care	Page 45
Lift Fitness	Page 19
Lily Caring Angels	Page 38
Loxton Groundcare	Page 22
Manor Farm	Page 39
Mayfair Estate Agents	Page 50
Misterton Garage Ltd	Page 23
My Bestie Pet Shop	Page 45

Mystical Aura	Page 7
North Perrott Farmshop	Page 23
Oven Gleaners	Page 41
P&P Trade Windows & Doors	Page 7
PB Mobile Aesthetics	Page 31
Passmores Ltd	Page 47
PCS Furnishing Centre	Page 1
Pegasus Pest Control	Page 5
Premier Window Cleaning	Page 21
Regency Care & Mobility	Page 16
Robert Frith Opticians	Page 34
Rodfords The Florists	Page 23
SCM Garage Doors	Page 17
Seals Cove	Page 8
Seasoned Hardwood Logs	Page 35
Smithy's Mobile Snack Bar	Page 43
The Admiral Hood Mosterton	Page 39
The Corner Garage	Page 17
The Fencing & Gate Co	Page 39
The Lace Knittery	Page 19
The Muddled Man Inn	Page 11
The Phelps Arms	Page 7
The Potting Shed	Page 12
The Squirrel Inn	Page 24
The Trading Post	Page 39
The Windwhistle Inn	Page 51
Tree Bespoke Woodwork	Page 17
Trees & Fencing	Page 10
Yarcombe Woodland Products	Page 29

Will Your Fence Survive This Winter?

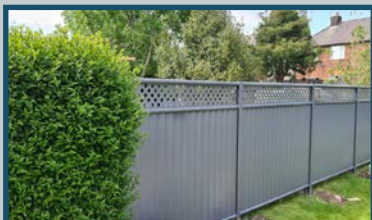


ColourFence Affordable Storm Proof Fencing



25 Years Of Maintenance Free Fencing That Won't Blow Down

Your Old Fence Taken Down For Free When You Choose ColourFence. Offer ends 31/12/23.



Rest easy in a storm
Withstands gusts up to 130 MPH

Professional Installation
Available

100% Recyclable

Maintenance Free

Finance Options



Book a free no obligation survey

ORDER A FREE BROCHURE AND SAMPLE PACK



colourfencesouthsomerset.co.uk 01935 481 013

T&Cs: Excludes Disposal of Old Fence, Hedges and Shrubs.

FENCE RAILINGS GATES SHEDS DOMESTIC COMMERCIAL TRADE SUPPLY ONLY

The Phelips Arms

MONTACUTE



Open: Wed - Thurs: 12noon - 3pm / 6pm - 10pm
Fri & Sat: 12noon - 3pm / 6pm - 11pm
Sun: 12noon - 5pm

Now taking bookings for Christmas parties
from 22nd Nov - 30th Dec. We will be open Tuesday
lunchtimes in December for Christmas parties.

Food Served Daily • Skittles • Accomodation
Beer Garden • Live Music • Buffet Menus
Private Function Room • Sunday Carvery

Tel. 01935 822557

WWW.PHELIPSARMS.CO.UK
THE BOROUGH • MONTACUTE • TA15 6XB

MYSTICAL AURA

Crystals - Incense - Spiritual & Wellbeing
- Re-enactment Gift Shop.



8 Church Street, Crewkerne, TA18 7HR
www.mysticalaura.co.uk Mysticalaura1@outlook.com

GEORGE BURGESS

Interior & Exterior
Painting & Decorating Specialist
Paper Hanging - Tiling
Property Maintenance
FREE ESTIMATES

Over 35 years experience - No VAT

18 Higher Beadon, Merriott, Somerset Mobile: 07866 866 833
Crewkerne: 01460 76788



Over 50 Years
Combined
Manufacturing &
Fitting Experience
Family Run
Friendly Customer
Service
24/7 Quoting
& Ordering

P&P TRADE WINDOWS PHILOSOPHY: To provide top quality, bespoke PVCu Windows, Doors and Conservatories that are made to measure at highly competitive prices.

Contrary to popular belief, not all Double Glazing companies are the same! - At P&P Trade Windows, we pride ourselves on being able to offer something that the others don't!

With over 50 years combined fitting and manufacturing experience, P&P Trade Windows know the service that our Customers need. Our in-house manufacturing facility complimented by our fast and reliable delivery system, allows us to offer an unrivalled Customer Service, which is why we are one of the leading Double Glazing suppliers in the South West.

P&P Trade Windows initially started as a small independent family window fitting business in 1997.

This hugely successful business has now added a 6,000 Sq Ft Factory and Offices to its portfolio. The Factory holds an extensive, modern manufacturing facility that is capable of producing A-rated PVCu frames, as well as PASS24 and Document Q for Windows, Doors and Conservatories. All made to measure especially for our Customers.

The addition of this in-house capability, coupled with the provision of a nationwide delivery service and fast and reliable service allows P&P Trade Windows to provide the Customer with exactly what it needs: Quality, Range and Price. This together enables us to meet Customer deadlines.

P&P Trade Windows are able to offer an extensive range of products that are not just restricted to those manufactured in-house. We also offer Aluminium Bi-Fold Doors, Aluminium Windows, Sliding Sash Windows, Composite Doors and Solid Roofs to name a few. All products are available in both standard and bespoke colours, as well as a full range of hardware.

Tel: 01935 825900 | Website: www.pandptradewindows.com | Email: sales@pandptradewindows.com

SEAL'S COVE
SENSE OF ADVENTURE

THE REEF
SOFT PLAY

JURASSIC RIDGE
CLIMBING CENTRE

Seal's Cove is Bridport's premier activity centre. We are fully air-conditioned, have a dedicated soft play room for our under 2s and a fantastic cafe with a daily selection of home-made cakes and snacks.

You will find your spirit of adventure at The Reef Soft Play and Jurassic Ridge Climbing Centre at Seal's Cove.

Visit our website for more information and to book now!

sealscove.co.uk | St Andrews Industrial Estate, Shoe Lane, Bridport DT6 3EX

Kitchen Kind
Transforming the one you have, to one you love ♡

With over 25 years experience in the kitchen industry offering a quality service.

- New Kitchens
- Quartz Worktops
- Replacement Doors
- Sinks & Taps
- Top Brand Appliances
- Kitchen Alterations
- Design Consultation.

www.kitchenkind.co.uk
Unit 30 Ilton Business Park
Ilminster
TA19 9DU
01935 250 310

ESTD. 1989

FMS & Co

FOR ALL YOUR BUILDING NEEDS

Kitchen / Bathroom Installation & Design
Painting & Decorating
Plumbing & Electrical
Floor & Wall Tiling
Laminate Flooring
General Maintenance

Mobile: 07732 335 376
Tel: 01460 391 845
18 Mintons, Chard TA20 2EJ
Email: fmsandco1989@gmail.com

CREWKERNE RUBBISH & WASTE SERVICES

Services we provide:

- ❁ RUBBISH CLEARANCE
- ❁ SHED & GARAGE CLEARANCE
- ❁ GARDEN CLEARANCE
- ❁ HOUSE/BUSINESS CLEARANCE
- ❁ METAL WASTE CLEARANCE
- ❁ BUILDERS RUBBLE CLEARANCE

Fully licenced waste carrier by the Environment Agency Ref. No. CBDU236078

All waste recycled where possible
Transfer notes provided

CHEAPER THAN SKIPS!!

PLEASE CALL FOR A FREE QUOTATION
07469 716452

Areas Covered:
Crewkerne, Chard, Bridport, West Bay,
Beaminster, Broadwindsor, Chideock
and all surrounding areas

Find us on:
facebook



TREES & FENCING

GENERAL LANDSCAPES



Picket • Panel • Featheredge fencing etc.
 Decking • Turfing • Post Replacements
General Fence Repairs
 All Types of Patios, Paths & Gravel
 Pruning • Felling • Hedge Trimming
 All green waste removed
 Fence Treatment • Exterior Painting
Pressure Cleaning



Friendly Free Quotation And Advice
 Ring Ted 07796 168388 / 01460 330124
www.treesandfencingsw.co.uk
treesandfencing@hotmail.com
 Licensed Waste Carrier ~ Fully Insured (tree Surgery up to 20 feet)

THE MUDDLED MAN



Open: Mon to Thur 11am - 2.30pm / 7pm - 11pm
 Fri & Sat 11am - Midnight, Sun 12 noon - 10.30pm

Food Served Daily • Sunday Roast
 Skittles • Accomodation

www.themuddledmaninn.co.uk
 WEST CHINNOCK | CREWKERNE | TA18 7PT
 TEL. 01935881235

Chalmers & CO

chartered accountants

Free initial consultation

- Personal & Business Tax Advisors
- Business Start Ups
- Payroll Bureau & Auto Enrolment
- Accounting & Audit Specialists
- Full Business Support Services
- VAT Returns & Advice

Your success is our business

 For all our recent updates 'like' us on Facebook

www.chalmersaccountants.co.uk
info@chalmersaccountants.co.uk

Offices at Crewkerne, Langport & Yeovil
 01460 279000

ahm installations

safer affordable bathing

Bathing a problem? We can help

- Easy accessible wet room showering
- Rapid bath out walk-in shower conversions
- Back to a warm deep soak with a walk-in bath
- Making bathing safer with simple changes; Grab rails, shower seats, raised WCs & slip resistant safety flooring
- Council (DFG), SSAFA and charity grants quotes available
- Discounts for over 60s and ex-service personnel

Call for our friendly advice, free survey and quote
01460 601123
info@ahminstallations.co.uk www.ahminstallations.co.uk

*Terms and conditions apply.

Showroom: Blackdown Garden Centre, Hockholler, West Buckland Wellington, TA21 9HY
 Opening times - Mon-Fri - 9am-5pm; Sat-Sun 10am-4pm
 Office: Unit 6, Brympton Way, Yeovil, Somerset, BA20 2HP

FREE* Mirrored cabinet or high raised toilet with any full bathroom installation


 Trustpilot
 AHM is rated Excellent


 APPROVED CODE MEMBER


 Alzheimer's Society



Christmas by The Potting Shed In Beaminster

We are back for our fourth year and our shop will be open from Saturday 7th October until mid-January 2024 IN THE SQUARE AT Beaminster

Our products include:

Unique tree decorations * Garlands

Homewares including candles, ceramic pots and unique hand-crafted wooden serving boards and beautiful Xmas table decorations
Silk flowers including bespoke arrangements, single stems and potted orchids

Opening hours: Tuesday - Saturday: 10am - 4pm * Monday & Sunday: Closed

We look forward to welcoming you to the shop

HENHAYES CENTRE



A charity to help the elderly.

A Centre for the whole community!

Big Christmas Roast Lunch & Cabaret Show

Sunday 10th December from 1:00pm
£24.50pp – BOOKING ESSENTIAL

To include a live Christmas Cabaret performed by Jan McNeill & Roast Turkey Lunch with all the trimmings followed by dessert.



Christmas Grotto

Saturday 16th December

Visit Father Christmas

BOOKING ESSENTIAL
Slots available 10am – 12noon



Coffee & Carols

With Charlie Greenwood

Thursday 21st December
10am – 12noon £4.50pp
Includes coffee/tea & mince pie.



Phoenix Brass Band Christmas Concert

Friday 15th December, Doors open 6:45pm



Tickets £13.00pp.



To include concert, a mulled wine, & a mince pie

Tel. No: 01460 74340 Email: office@henhayescentre.org Reg. Charity: 1181781



DOMESTIC AND COMMERCIAL WINDOW CLEANING

- Conservatory Roof Cleaning
- Fascia/Soffit Cleaning
- Jet Washing
- UPVC Cleaning



01460 279665 | 07733 316637
cthruclans@gmail.com

45 Thomson Drive,
Crewkerne, TA18 8AQ



Barrie Carter & Alan Bartlett Classic & Vintage Car Restoration



Experts in Pre & Post War MG's & All Classics
60 Years of Vintage Restoration before they were Vintage!

See Alan's Award winning Jowetts & Barrie's Different TC

- XPAG Engine Rebuilds
- Carburettor Rebuilds
- Gearbox Rebuilds
- Anything on any Engine
- Unleaded Head Conversions
- Chassis Up Restorations

Servicing
T Type Spares Bought & Sold
Racing Preparations
Collection & Delivery Anywhere in Europe
Advice, Anecdotes and Catastrophes

barriecartermg.com
01308 868884 | 07885 768830



CONTACT US

Phone: 01460 242609

Email: office@ablealexltd.co.uk

Website: ablealex.uk

We are a local company covering Crewkerne to Bridport and other surrounding areas

Our services include:

- Hard Landscaping, such as decking, patios and fence installations.
- Soft landscaping, such as planting and general gardening
- Hand drawn garden design

Along side other services



Unit 2 | The Old Yard | Logge Farm | South Petherton | TA13 5DJ

COMMUNITY SUPPORT TO CREATE A TOWN PARK GROWS AS WAIT FOR NEW CAR PARK CONTINUES

Community support to create a town park on a large plot of open green space, which is adjacent to Henhayes recreation field and behind the Millers Garage site in Crewkerne, is growing. Public meetings, organised by Space4Crewkerne, were held at the Speedwell Hall on July 25th and August 24th when attendees were invited to discuss 'town park or housing' and explore the possibilities of future use of the green site, which covers approximately 3.32 acres. A petition to save the green space, referred to as Cropmead Orchard, has been started by Space4Crewkerne with paper copies available from Crewkerne Museum in East Street, Carousel in Market Street and Green Dragon Bookshop in the George Shopping Centre. There is also an online petition available to sign at www.change.org

Space4Crewkerne which was formed about three years ago to examine the Safe Pedestrian And Cycling Environment of Crewkerne have carried out surveys around the town to 'encourage the town council to improve the safety of all' when using 'active' travel to access the shops and facilities provided in Crewkerne. A spokesperson for the group said: "Recent council meetings have prompted us to consider

the recreational use of land adjacent to the Henhayes sports pitches and backing onto East Street, known in the past as Cropmead Orchard. A planning application to build 50 houses on this site, is according to the council, 'imminent'. We are currently running a campaign to raise public awareness and fire enthusiasm for our vision for Crewkerne – a Town Park, allotments, informal recreational areas, that can be accessed by all to enjoy peace and quiet, fresh air and space to relax. Cropmead Orchard is the only remaining space left in Crewkerne that could provide a much needed facility available to all."

The close proximity of the privately owned piece of land to the Millers Garage site, now owned by Somerset Council, is presenting an 'alternative approach' of provision of the long awaited car park off East Street, which received planning permission on application no: 18/00754/FUL on August 16th 2019 for the demolition of existing buildings and change of use of site to a tarmac 'pay and display' car park for 60 vehicles, to include lighting columns.

A group of local residents, Space4Crewkerne group members and town councillors, gathered at the Millers Garage site in July last year to unveil a banner asking 'Where Is Our Promised Car Park'. Although the roofs from the garages had been removed and several trees had been felled in preparation,

no further work had been carried out. Residents admitted being totally 'mystified and frustrated' at the lack of progress for the long stay car park, whose ingress will be off of East Street and egress through the existing Henhayes car park. Crewkerne resident Pat Lunt said at the time that "attempts to find out when the car park will be delivered have been met with a wall of silence. What is the problem? The planning permission is in place, the money has been allocated and in the meantime, the parking problems faced by residents of East Street and Mount Pleasant continue and the wider benefits of more long-stay parking for workers and businesses in the town are also being denied."

The Scrutiny Committee of SSDC were called in on the car park project as additional funding had been requested from the Corporate Capital Contingency Budget, with the increased cost projections noted as £413,000. Three possible options were presented: Option A – build and deliver the car park as originally planned. Option B - agree to a land swap and delivery of a car park on adjoining land at no cost to the Council. Option C – do nothing and leave the

decision in the hands of the new Somerset Council, which became fully operational in April. Many people share the 'vision' to create a town park with allotments and pedestrian and cycle links to the new homes at Wool Gardens, while also supporting a new car park, which should make this a 'win win situation' for everyone.

By Ana Collingridge (c)



Philip Harris setting up the Space4Crewkerne stall with information board and petition in the George Shopping Centre on Saturday September 9th.



A gathering of concerned residents, town councillors and members of Space4Crewkerne who are frustrated with the long delays for the promised car park at the Millers Garage Site.



The Millers Garage Site padlocked and with warning notice of asbestos, after the purchase of the land by SSDC.



Looking through the barbed wire to the privately owned piece of land referred to as Cropmead Orchard and in ideal location to provide a town park with pedestrian and cycle paths leading to and from the Key Site housing development.

SPACE4Crewkerne 

Safe Pedestrian And Cycling Environment for Crewkerne is our priority.

We are currently looking at the area of land next to Henhayes Recreation field, originally orchard, and the possibility of it becoming a Town Park and wildlife corridor. This is the only open, easily accessible area of land in town that could provide:

- ALLOTMENTS
- AREAS TO PLANT TREES, INCLUDING ORCHARD
- LINKS FOR WALKERS AND CYCLISTS AWAY FROM MAIN ROADS
- A SPACE TO RELAX IN THE CENTRE OF TOWN
- A TOURIST ATTRACTION
- A NATURAL ENVIRONMENT FOR EXISTING WILDLIFE

If you like this vision of Crewkerne's future and want more information email us space4crewkerne@hotmail.com or visit our Face Book page

Regency

Care & Mobility



“For a new
lease of Life”

01460 271172

www.regencycareandmobility.co.uk

- Rise and Recline Chairs
- Rise and Recline Beds
- Bath Lifts
- Mobility Scooters
- Daily Living Aids
- **FREE** After Care Service
- **FREE** Call Outs & Home Demonstrations

Part exchanges offered
on scooters



Open
Monday to Saturday
9:00am to 4:00pm

10 Falkland Square
Crewkerne TA18 7JS

Email: regencycareandmobilityltd@btconnect.com

Working with the NHS



M.O.T. TESTING  RECOVERY SERVICE

THE CORNER GARAGE

ESTABLISHED 1936

ALL MAKES SERVICED, SPECIALIZING IN
Volkswagen ŠKODA Audi SEAT

PROPRIETOR: MR CHRIS DAVID

MELPLASH, BRIDPORT, DORSET, DT6 3UD

TEL. 01308 488238



CORNERGARAGE@BTCONNECT.COM



MOBILE: 07799 335 287

CLASSIC CAR ENTHUSIASTS

ALL TYPES OF CLASSIC CAR
WORK UNDERTAKEN

OVER 45 YEARS OF EXPERIENCE

PLEASE RING 01308 488238
TO DISCUSS YOUR NEEDS

SCM GARAGE DOORS

If you want to make your garage more secure, or want a way to improve the value and look of your property then have a new garage door installed by our professional team.

10 year guarantee on new installations - Free estimates & advice

We offer slim profile and high grade, secure aluminium window shutters in a range of colours. Our shutters can be installed internally or externally and can be controlled by wall switch or your smartphone.



Tel: 07902 501114 Facebook: **SCM garage doors**
Email: simon@scmgaragedoors.com Website: www.scmgaragedoors.com



Bespoke Woodwork

- Windows
- Doors
- Conservatories
- Kitchens
- Fitted Furniture

07508 376 003

lottie@treewoodwork.co.uk

www.treewoodwork.co.uk

We are a local, family-run business installing, repairing and maintaining all types of garage doors & window shutters.

Crewkerne in Bloom

It wouldn't be Christmas in Crewkerne without our popular **annual sale of hyacinths** and volunteers spent a happy morning early in October potting the bulbs. Find them at our stall in the **November Farmers' Market as well as at the Town Hall** - and any other shop or business that might be kind enough to sell them for us.

Three to a pot, they come in pink, blue or white and despite rising costs we're keeping the price at **£4**. Proceeds will go towards our programme of further cheerful planting around our lovely old town.

This year, thanks to the enthusiasm of volunteers, we took on more, somewhat neglected areas such as the **Henhayes playground** and the strip of land by the **Bowling Club** in the West Street Car Park. Do let us have suggestions for other places where you think we may be able to work our magic.

Of course our small team can always do with extra help so please get in touch if you can offer even just half an hour of your time each week. We'll find a niche for you!

We were encouraged by the interest in our **Potager** veg bed and the **herb baskets** (between Waitrose and The Library). These show just how much can be achieved in a small garden plot. We donate the produce to **The Community Church**, but you're welcome to pinch some herbs as you pass - as well as perking up your meals it helps re-growth!

Weren't the colourful hanging baskets particularly magnificent this year? To our relief, their resilience in Summer's unusually stormy weather was impressive. Plans for next year's scheme are already underway.

Keep up to date with our activities on facebook and Instagram and via our website where you can also sign up for newsletters.

For further information, to volunteer or to offer support in any way, please contact us on 01460 72665 or hello@crewkerneinbloom.org. No experience needed, only your enthusiasm for keeping Crewkerne looking colourful and cared for.





www.lift-fitness.co.uk

WORK HARD, HAVE FUN, GET RESULTS!

★ ★ ★ ★ ★ COACHED CLASSES
★ ★ ★ ★ ★ PERSONAL TRAINING

f i 3-5 South St, Crewkerne w 07876664111

First month FREE with this advert!



HOT FOOD & DRINKS

Phone orders taken for collection
07586 670389

Monday - Friday 8.00am-2.30pm
Just off the A356
Furrington Farm, Crewkerne, TA18 7NJ

L.S.G PLUMBING & HEATING

Parkfield, Station Road, Crewkerne, Somerset

All Plumbing & Heating Works Under Taken

No Job Too Small
Free Estimates
Fully Qualified & Insured
TEL: 07496 345043

Find us on  facebook



Installing, Servicing & Breakdowns

- Boilers
- Bathrooms
- Kitchens
- Upgrades
- Gas Safety Reports
- Maintenance
- Underfloor Heating
- Unvented Hot Water

A Family owned business established in 2013




Lace Knittery

We specialise in natural fibres, heritage yarns, sustainability, and ethical crafting.

07795193219 or 07795197473

The Manor Annexe, Horton Manor,
Horton Cross, Ilminster TA19 9PY
Open: Monday-Saturday 9:30-4pm.

www.thelaceknittery.com

thelaceknittery@outlook.com @thelaceknittery

CREWKERNE TAXIS

Providing a friendly and reliable service to Crewkerne and surrounding areas.



BOOKING ESSENTIAL

Like & follow us  @CrewkerneTaxis

01460 75088






HALSTOCK SHEDS
More than just sheds

Call us today
for your free quote

sales@halstocksheds.co.uk
01935 891007



- We also have 3 other display sites:
- Castle Gardens-Sherborne
 - Gould's Garden Centre-Weymouth
 - Brimsmore Gradens -Yeovil
- Bespoke timber buildings
 - Garden sheds
 - Summerhouses
 - Potting sheds
 - Wooden gazebos
 - Home offices
 - Field shelters
 - Stables
 - and more



Did you know we now also make and supply our own concrete & wooden fencing products with a fully stocked yard here in Halstock



10% OFF YOUR BEST QUOTE FROM A REPUTABLE RETAILER
(FOR CONCRETE AND FENCING PRODUCTS ONLY)

SALE 8' CONCRETE INTERMEDIATE/ H POSTS
£12 EX VAT (COLLECTION ONLY)

Find our workshop and main display site at Higher Halstock Leigh BA22 9QZ
Open Monday-Friday 8:30-5:00 Saturday 8:30-12:00
Now recruiting for a qualified carpenter with minimum 3 years experience send us your CV.



Premier Window Cleaning

10% OFF GUTTER CLEANING

Window Cleaning
Pressure Washing | Solar Panel Cleaning
Gutter Cleaning | Roof Cleaning



Please contact us for your FREE quotation today.
Office: **01935 700 158** Mobile: **07915 091 605**
Email: **simon@premierwindowcleaninguk.co.uk**
Follow us @PremierWindowCleaning

YEovil, TAUNTON, CHARD & ALL SURROUNDING AREAS
UNIT B • FOREST ENTERPRISE PARK • WOOD LANE • ASHILL • ILMINSTER • TA19 9LP

Self Contained Annexe

WITH OWN FRONT DOOR

HOSTED BY CHRIS & ALI

Walking distance from Crewkerne Railway Station with off-road parking.



go to the
airbnb
website for
BOOKINGS
& PRICES



G.O.T

Decorating

GARETH TANNER

38 Years Experience • Reliable Service • Free Quotes • No VAT

077366 44452

City & Guilds

Loxston

GROUND CARE

Specialists in Grass and
Scrub Cutting Equipment

www.loxston.co.uk

www.irus-mowers.co.uk

New Road, Seavington St
Mary, Ilminster TA19 0QU

01460 242562



SECURE SELF STORAGE
24/7 ACCESS
UNITS GROUND LEVEL
OWNER LIVES ON SITE
LOVELY LOCATION

www.barn-store.co.uk
01460 242800

YEABRIDGE FARM
PRODUCE, GLAMPING, STORAGE

Yeabridge Farm, South Petherton
Somerset, TA13 5LP

Rodfords THE FLORIST

Providing high quality, fresh flowers
to Crewkerne and surrounding
areas for over 30 years

Tel: (01460) 72584

17, MARKET SQUARE
CREWKERNE, TA18 7LG

www.rodfordstheflorist.co.uk



North Perrott Farm Shop

Toward a Sustainable Rural Economy

Open Mon - Sat 9am - 5.30pm

Lunches Mon to Sat 12am - 2pm TA18 7SS

www.parrettbrand.co.uk Tel. 01460 77090



MITCHELL & BROWN

Panasonic

LOEWE.

Opening Hours
Mon-Fri: 9:00-5:00
Sat & Sun: Closed

AUDIO

Robert's

SONOS



DOMESTIC APPLIANCES

Most major brands available



H.R.HODGE

TV & AUDIO SPECIALIST

38 St James street, South Petherton

01460 240 645

hrhodge.co.uk



Misterton Garage LTD

MOTS & SERVICING • COMPETITIVE PRICES

BATTERIES, TYRES • EXHAUSTS & BRAKES

FREE COURTESY CAR

QUALTY USED CARS

PETROL STATION

ALL MAKES & MODELS SERVICES

FORD SERVICE
CENTRE



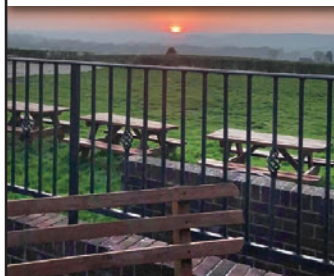
www.mistertongarage.co.uk

Tel: 01460 72997 Fax: 01460 73661

Misterton, Nr Crewkerne TA18 8LY

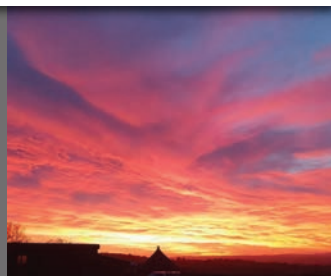
THE SQUIRREL INN

Visit Our Warm & Welcoming Pub Near Chard, Somerset



AMPLE
OUTDOOR
SEATING &
AMAZING VIEWS

Boasting the best sunsets
in Dorset & Somerset



STARTERS

Spiced Roasted Red Pepper & Tomato Soup
Chicken Liver, Port & Stilton Pate & Toast
Creamy Roast Garlic Mushrooms in a Bread Bowl

MAIN COURSE

Roast Pork Chop with Black Pudding & Homemade Apple & Cider Sauce
Lamb Chump Steak with a Fresh Mint Cheese Crust
Hand Carved Turkey Breast, Pigs in Blankets & Stuffing
Roasted Veg Hotpot

All served with Seasonal Vegetables, Roast Potatoes & Homemade Gravy

DESSERT

After Eight Cheesecake
Spiced Apple & Toffee Bread & Butter Pudding
Xmas Pudding & Brandy Cream

PRICES

3 Course plus bottle of wine £35 | 3 Course £25 | 2 Course £20



MONDAY: CLOSED, TUESDAY: 5PM - 11PM

WEDNESDAY: 5PM - 11PM, THURSDAY: 12PM - 2.30PM & 5PM - 11PM

FRIDAY: 12PM - 11PM, SATURDAY: 12PM - 12AM

SUNDAY: 9.30AM - 10PM

Disability access throughout the pub - Disabled toilet - Access ramp into beer garden

LIKE AND FOLLOW US ON FACEBOOK  @SQUIRRELINN

Telephone. 01460 30298 Email. squirrelinn1@btconnect.com Facebook. @squirrelinn

LAYMORE | WINSHAM | CHARD | SOMERSET | TA20 4NT

HOME CARE SERVICES

OUR SERVICES

Live in Care
Domiciliary Care
Well-Being Checks
Shopping /Cleaning /
Meal Preparation
Stroke Care /Dementia Care /
End of life & Rehabilitation



30 YEARS
EXPERIENCE
IN CARE

 01308 459204
www.angelcarers.com


Registered Providers of Care





Map Key:
 Defibrillator
 Electric Car Charging

- | | | |
|--------------------------------|-------------------------------------|-------------------------------|
| 1. Able Alex | 15. Crewkerne Small Business Centre | 28. Kerry's Quality Food |
| 2. Air BNB | 16. Cricket St.Thomas | 29. Kitchen Kind |
| 3. Aistheta Skin Clinic | 17. Ear Wax Removal Solutions | 30. L.S.G.Plumbing & Heating |
| 4. Allen Computer Services Ltd | 18. EGF Carpets & Vinyls | 31. Lift Fitness |
| 5. Antiques Bazaar | 19. Elswood Cleaning Supplies | 32. Loxtons Groundcare |
| 6. Atkins Auctions | 20. Everys Solicitors | 33. Manor Farm |
| 7. Auto Refurbs | 21. FMS & Co | 34. Mayfair Estate Agents |
| 8. Barnstore Yeabridge | 22. Hamstone Vets | 35. Misterton Garage Ltd |
| 9. Bridport Auction House | 23. H.R.Hodge | 36. My Bestie Pet Shop |
| 10. C Thru Cleaning | 24. Hollies Unisex Salon | 37. Mystical Aura |
| 11. Carbin Heating Ltd | 25. Homefire | 38. North Perrott Farmshop |
| 12. Carousel | 26. IQD Frequency Products | 39. P&P Trade Windows & Doors |
| 13. Chalmers & Co | 27. JF Auto Repairs Ltd / JF Cars | 40. PCS Furnishing Centre |
| 14. Crewkerne Garage Services | | 41. Premier Window Cleaning |

- 42. Regency Care & Mobility
- 43. Robert Frith Opticians
- 44. Rodfords The Florists
- 45. Seals Cove
- 46. Smyth's Mobile Snack Bar
- 47. The Admiral Hood Mosterton
- 48. The Corner Garage
- 49. The Lace Knittery
- 50. The Muddled Man Inn
- 51. The Phelps Arms
- 52. The Potting Shed
- 53. The Squirrel Inn
- 54. The Trading Post
- 55. The Windwhistle Inn
- 56. Yarcombe Woodland Products

MOBILE SERVICES:

- AHM Installations
- Angel Carers
- Ashlands Gardens
- Beale Heating & Building Ltd
- Bike Vet
- Classic Car Restoration
- Colour Fence
- Crewkerne House Clearance
- Crewkerne Rubbish & Waste Services
- Crewkerne Taxis
- Fred Davies - Quality Joinery
- George Burgess Painter & Decorator
- G.O.T.Decorating
- Halstock Sheds
- Jim Allen Building
- Libertas Care
- Lily Caring Angels
- Oven Gleaners
- PB Mobile Aesthetics
- Passmores Ltd
- Pegasus Pest Control
- SCM Garage Doors
- Seasoned Hardwood Logs
- The Fencing & Gate Co
- Tree Bespoke Woodwork
- Trees & Fencing

CREWKERNE CARERS GROUP

3RD THURSDAY OF THE MONTH 2 PM - 3.30 PM



HENHAYES CENTRE

SOUTH STREET, TA18 8DA

 USE THE MAIN CREWKERNE CAR PARK

 FLEXERCISE SESSION FOR YOUR CAREE FOR IN ADJOINING ROOM.



Meet people who support and care for their family or friends.

Share laughs, ideas and experiences in a relaxed, supportive, safe atmosphere.

Regular, professional speakers and signposting to help save you time and energy!



For one-to-one support as a Carer, contact Somerset Carers Service

0800 31 68 600

www.somersetcarers.org



For information about the group contact:

Cath Holloway 07951 944420

cath.holloway@sparksomerset.org.uk



CREWKERNE SMALL BUSINESS CENTRE

Crewkerne Small Business Centre is a modern, professional office building.

We currently have hot desks, meeting rooms and are excited to create a local business community.

01460 78000

WWW.CREWKERNEBUSINESSCENTRE.COM

UNIT 2E, CROPMEAD INDUSTRIAL ESTATE, CREWKERNE, TA18 7HQ

Auto Refurbs Ltd

From minor bump to major thump



- Low Bake Oven • Fully Equipped Body Shop
- Alloy Refurbishment • Air Conditioning
- Light Commercials • Caravans & Campers
- Motorbike Body Repair • Insurance Approved
- Collection & Delivery • Free Courtesy Cars

01460 78000

www.autorefurbs.co.uk

workshop@autorefurbs.com

[@AutoRefurbsLtd](https://www.facebook.com/AutoRefurbsLtd)

**2E | CROPMEAD INDUSTRIAL ESTATE
CROPMEAD | CREWKERNE | TA18 7HQ**



YARCOMBE WOODLAND PRODUCTS™

1981

 Fencing • Decking • Timber • Log Stores
Sheds • Sleepers • Fixings & Furniture • Gates 

Bespoke Designs • Treated Timber • Domestic & Agriculture Products

Stockbridge Wood, Hinton St George, TA17 8TN

Email: info@yarcombewp.com Tel: **01460 76238** Website: yarcombewp.com

CHRISTMAS TREES ARRIVING 28TH NOVEMBER

ATKINS AUCTIONS

Old Style Values
New Style Auctions

GAMBERLAKE
AXMINSTER EX13 5JZ

OPEN 9 - 5 Monday - Friday

01297 631661

www.atkinsauctions.co.uk

MONTHLY AUCTIONS OF
ANTIQUES • COLLECTABLES • JEWELLERY
ART • RETRO • ANYTHING OLD & INTERESTING



FULL OR PART HOUSE CLEARANCES

17% COMMISSION Plus VAT

- NO MINIMUM CHARGE • NO LOTTING CHARGE
- NO ADMIN CHARGE • NO PAT TEST CHARGE
- NO INSURANCE CHARGE

TRUST • TRANSPARENCY • TREASURES

Having originally come from a background in paediatric complex care, mobile aesthetics uses many of my skills to offer a large range of procedures in the comfort and privacy of clients homes.

All my clients are reassured that I am fully qualified and NHS registered; meaning that I am licenced to obtain and administer prescription medication products - which meet the highest standards of quality and safety.

I love visiting all my clients and seeing how much better they look and feel on the inside as well as the outside after a treatment or procedure. They tell me they feel very informed and satisfied with the results.

It's a pleasure working with my clients and meeting new clients. Please do not hesitate to contact me with any questions you may have or to make a booking for a free consultation.

Patricia



Aesthetic treatments delivered in the comfort and privacy of your own home
NHS REGISTERED - FULLY QUALIFIED
Tel - 07890 329 777

Patricia Brown Mobile Aesthetics
Direct Message Me
pbbmobileaesthetics@gmail.com

Experiencing hearing loss,
ear ache & blocked ears?

IT COULD JUST BE WAX!



People have become accustomed to attending various appointments to ensure they maintain a good standard of health and wellbeing. It is considered normal to regularly assess the eyes and teeth, so why are ear and hearing health check-ups less common?

What are the symptoms of ear wax build-up?

- hearing loss
- earache or the feeling that your ears are blocked
- tinnitus, i.e. ringing or buzzing in your ears
- vertigo, i.e. feeling dizzy & sick

During your appointment Samantha your experienced clinician will be able to assess your ears, and if wax is present, gently remove it with micro-suction. Microsuction is the gold standard of wax removal and is much safer than other methods such as irrigation.

Cornhill House, 17 Market Square, Crewkerne, Somerset, TA18 7LG

Home Appointments are also available

Call us on: 0800 001 6608 | 07943 053084

Email: info@earwaxremovalsolutions.com



ASHLANDS GARDENS

Tired and Neglected Gardens Restored & Maintained

Sarah and Steven are local gardeners located in Crewkerne operating within a 10 radius. We specialise in overgrown, neglected gardens in need of TLC. Former backgrounds. Head gardener and groundsman for private estates over 35 years experience.

Brief outline of work undertaken

- ✓ Border Design & Construction
- ✓ Planting & Supply Of
- ✓ Pruning: Roses, Shrubs, Trees
- ✓ Soil Improvement
- ✓ Turf laying/Seeding
- ✓ Grounds Clearing
- ✓ Seasonal Maintenance
- ✓ Mole Control

It's That Time To Prepare Your Garden
For The New Growing Season

For a free no obligation quote-discussion please do get in contact either by email or phone:

Email: ashlandsgardens@gmail.com | Website: www.ashlandsgardens.co.uk

Mobile: 07548 210606 | Land: 01460 78192





**Crewkerne Information Centre -
Your one stop shop for local
& tourist information!**

You'll always find a friendly face when you call in to our information centre in the Town Hall. Our volunteers, all local residents, are happy to help with your enquiries about the Town, its services, shops, businesses, eateries, clubs and organisations as well as places to visit nearby. You will find a range of leaflets, local maps, bus timetables, local walks, souvenirs and much more.

Check out our windows for information about local events and activities in and around the town and watch out for the special window displays by local groups and organisations.

Over the past twelve months we have hosted exhibitions for the launch of the Neighbourhood Plan, Coronation colouring competition and St Bartholomew's School photographic competition.

The digital display screen has run slide shows for Filmcrew, Friends of



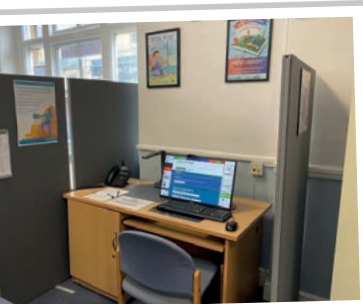
Crewkerne Station, The British Legion, Bincombe Beeches and historic photos from Crewkerne Museum as well as a whole range of local photographs of places in and around Crewkerne.

We also have a Customer Access Point for Council services and the Citizen's Advice are here every Wednesday for a drop-in session.

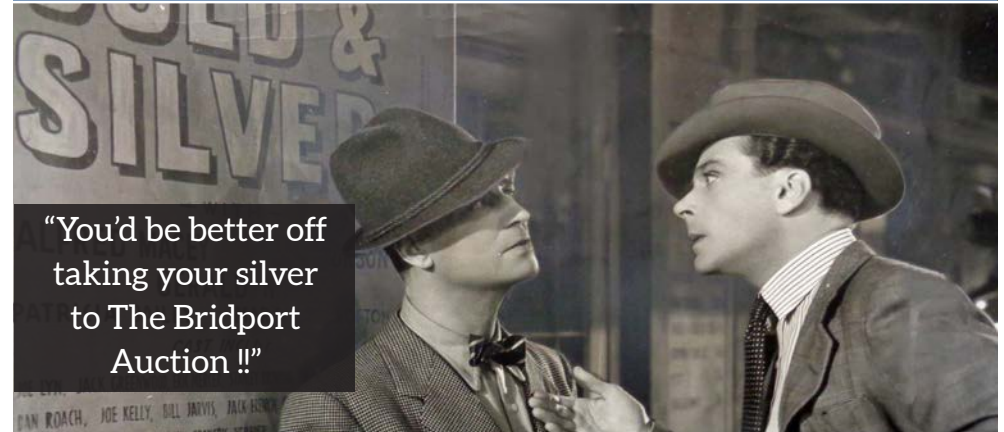
Perhaps best of all, every Christmas Santa's Grotto is here to welcome children of all ages on Crewkerne's Lighting up Night.

Come in and see us Monday - Friday 9.30am - 1pm we'd love to see you. Or contact us if you are a local group or organisation and would like to book a display space.

www.discovercrewkerne.org.uk
FB: crewkernelocalinformation
email: lic@crewkerne-tc.gov.uk
Tel: 02460 75928



BRIDPORT AUCTION HOUSE



**"You'd be better off
taking your silver
to The Bridport
Auction !!"**

**Monthly sales of Collectables and Antiques since 1998 and still going strong
with live online sales reaching a world-wide audience.**

Telephone: 01308 459400 for entries in forthcoming auctions.
www.bridportauctionhouse.com Email: info@bridportauctionhouse.com

**“
Whatever your
legal needs,
talk to Everyys.
”**

- Residential & Commercial Property
- Family Law
- Inheritance Tax
- Wills, Trusts and Probate
- Personal Injury
- Disputes and Claims
- Company & Commercial
- Agricultural/Rural

Located across Somerset and East Devon, our solicitors can provide you with expert advice to guide you through your matter from start to finish.

**Call us on 01460 279279
or email law@everyys.co.uk**

everyys
solicitors
Incorporating Stokes Partners
everyys.co.uk

Crewkerne • Taunton • Honiton • Exeter • Exmouth • Sidmouth • Seaton • London
Authorised and Regulated by the Solicitors Regulation Authority (no. 655338).



ROBERT FRITH OPTOMETRISTS

INTRODUCING **optomap**

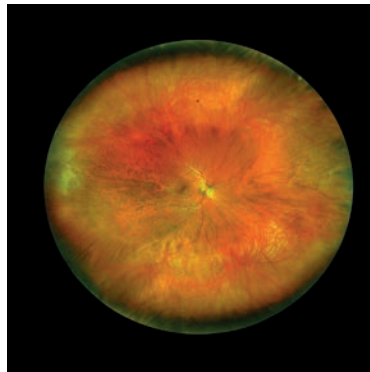
A 200 degree picture of inside the eye allowing earlier detection of eye disease and monitoring of eye health as part of a comprehensive eye exam.

In less than 1/2 second, this painless procedure produces a single image of 82% of the retina at once, increasing to 97% when a series of 5 is taken.

Why settle for less when having Optomap advanced ultra widefield imaging included in your comprehensive eye exam lets us see more!

WHY SETTLE FOR LESS?

WITH OPTOMAP UPTO 97% OF THE RETINA IS SEEN



Tel: 01460 72964

Email: crewkerne@frithsopticians.co.uk


7-8 Falkland Square, Crewkerne TA18 7JS.

Opposite Costa Coffee.

www.frithsopticians.co.uk

BIKE - VET


Bike in need of Repairs? Servicing? Inspection?
FOR BIKES WE ARE THE MOBILE SERVICE
BIKE-VET®

You call. We arrive at the location of your choice.
Our mobile workshop is fully kitted with spares, the necessary tools and we carry out all repairs. We serve all areas covered by this magazine. Contact Graham for an appointment to suit you.
Phone: 01935 473034 | Mobile: 07749 245603
We also have new and used bicycles for sale
Graham Gillard, 87 Magna Close, YEOVIL, BA21 5RS 

HOLLIE'S

Unisex Salon & Barbershop
Tel. 01460 271 112

Open: Tue 9.30 - 5pm, Wed 9.30 - 4pm,
Thur & Fri 9.30 - 6pm, Sat 8.30 - 1.30pm
Closed: Monday & Sunday

Like and follow us  @Hollie's

UNIT 1 | THE GEORGE SHOPPING CENTRE | CREWKERNE

CREWKERNE HOUSE CLEARANCE



RUBBISH AND WASTE REMOVAL

CALL NOW ON
01460 769 20
OR
07929 567 313

Seasoned Hardwood Logs

Seasoned & Dry • Free Delivery
Various Bulk Load Sizes
Hardwood Wanted

Small & Large Loads
07973 871708
01935 825506 (eve)

Jim Allen

Building Services & Roofing Contractor

- New Builds / Masonry
- Blockwork Rendering
- Re-roofs / Repairs
- Carpentry & Maintenance
- UPVC / Guttering

aljim996@aol.com

www.jmallenbuilding.co.uk

01308 863809 | 07976 372045



FRED DAVIS - QUALITY JOINERY

KITCHENS

Bespoke kitchens designed, measured and fitted.

WINDOWS/DOORS

We have the ability to produce both soft and hard windows and doors.

STAIRS

A full design consultation is included before the creation of your bespoke staircase.

FURNITURE

Coffee tables, dining tables, TV units, wardrobes and breakfast bars.

07810 126759 infofreddavisjoinery@gmail.com

James Ford and his team at JF Cars & JF Auto Repairs provide essential support for car-owners in and around Crewkerne.

JF Cars South West Ltd offer a good range of interesting used cars on their forecourt at the Texaco garage in South Street, Crewkerne. Always a 4x4 or "hot-hatch" in stock. Full dealer facilities, and stock changing daily.

JF Auto Repairs Ltd have a modern workshop conveniently situated adjacent to Crewkerne railway station. The team offer Class 4 & 7 MOT's, servicing, repairs, MOT preparation, tyres. "We have courtesy cars available, but please remember to reserve one at time of booking your service or MOT, because courtesy cars are always in demand. When your vehicle is next due an MOT or a service why not give us a call or email?"

Regards, Donna, James & Tom
JF Auto Repairs Ltd

Telephone: 01460 247446
Email: jfautorepairs@gmx.co.uk



QUALITY USED CAR SPECIALIST IN CREWKERNE SOMERSET WITH FULL DEALER FACILITIES

- PART EXCHANGE TAKEN
- FINANCE AVAILABLE
- CREDIT & DEBIT CARDS
- QUALITY CARS PURCHASED

01460 72517
07904 034527
jandfcars2010@yahoo.co.uk



WWW.JFCARS.NET

JF AUTO REPAIRS LTD

MOT • SERVICE • REPAIRS

01460 247446
jfautorepairs@gmx.co.uk

All garage work undertaken from tyres & exhaust to full service and cam belts.
Aircon maintenance.
All at competitive prices.



Find us behind Bradfords next to Crewkerne Station
Unit 3 Crewkerne Station, Crewkerne TA18 8AU



**CREWKERNE & DISTRICT
ARMED FORCES
& VETERANS
BREAKFAST CLUB**

Come and join us for
Tea - Coffee - Croissants,
Bacon, Egg and Sausage Baps,
Lots of Banter and Tall Stories

Promoted by Crewkerne Branch
Royal British Legion

Open to all;
Serving Armed Forces, Veterans,
Merchant Navy, RBL Members, Partners,
Guest and Visitors are welcome to join us
on every 3rd Saturday of the month
from 1030 at

OSCARS Wine Bar Crewkerne 01460 77494

CAROUSEL



Merry Christmas to all our customers

Caroussel is a high street shop in Crewkerne, Somerset selling crafts and artwork made by local artists and artisans.

- Over 50 skilled artists & makers
- Jewellery repairs
- On-line shopping

Mon 10am to 2pm Tue to Frid 10am to 4.30pm
Saturday 10am to 2.30pm Closed Sundays

**29a Market Street, Crewkerne,
Somerset TA18 7JU**

T: 01460 75761 or M: 07825 508924
www.carousselartsandcrafts.co.uk



CUDOS PRESENTS

24TH TO 27TH JANUARY 2024

THE THREE MUSKETEERS

A Pantomime by Vicky Orman

7.30 PM

THE VICTORIA HALL, CREWKERNE
(MATINEE: 27TH JANUARY at 2.30 PM)

TICKETS: £10 & £8 (CONCESSIONS)
TICKETS AVAILABLE FROM:
WWW.CUDOSCREWKERNE.COM
OR FROM: 01460 74380

CUDOS PRESENTS

CHRISTMAS CONCERT

1st & 2nd DECEMBER
at 7.30pm

VICTORIA HALL, CREWKERNE
TICKETS: £10

TICKET PRICE INCLUDES A MINCE PIE
AND A GLASS OF MULLED WINE

TICKETS AVAILABLE FROM:
WWW.CUDOSCREWKERNE.COM
OR FROM: 01460 74380

THE ADMIRAL HOOD

Mosterton · Beaminster · Dorset · DT8 3HJ

HONEST FOOD IN A REAL PUB

Telephone: 01308 868338
www.theadmiralhood.co.uk

**CHRISTMAS MENU
NOW AVAILABLE**



MANOR FARM'S OWN!

We have fresh veg & fruit, as well as plants, free range eggs, apple juice, cottage style flowers, local honey, jams & chutneys! If you want a variety of fresh produce, come & visit our small rural farm cabin!

Visit our website
manorfarmsown.weebly.com

Manor Farm, Lower Street, Merriott, TA16 5NP · Tel: 01460 72797
Email: manorfarmsown@gmail.com f@manorfarmsownmerriott



THE FENCING & GATE COMPANY

Domestic fencing specialist
Over 30 years experience
Free survey and quotation
10 year guarantee
No VAT

**01935 330 095
01460 353 046**



Lily Caring Angels

Passionate about care

Passionate about care Tel: 01460 929090
Email: admin@lilycaringangels.com Website: www.lilycaringangels.com

Located in Chard, Somerset and covering the surrounding area. the primary aim of "Lily Caring Angels" is to enable clients to remain as independent as possible, whilst being supported at home in a way which takes into account rights to dignity, privacy, and confidentiality in a respectful manner at all times.

Merry Christmas from all of us at Lily Caring Angels




Live In Care (both short & long term) • Wakeful or sleep in night care
Respite Sitting Shopping • Getting up or going to bed • Personal Care • Meal Preparation
Laundry • Social inclusion • Catheter care, stoma bags, and "out of hospital" care.



trading post

FARM SHOP · SOMERSET

f i

Trading Post Farm Shop
Lopenhead | Somerset | TA13 5JH

01460 241666
hello@tradingpostfarmshop.co.uk
www.tradingpostfarmshop.co.uk

Westcountry Cheese Deli
Large Organic Selection
Exclusive Gin Collection
Local Beers & Ciders
Fresh Eggs
Daily Fresh Bread
100+ Local Suppliers
Ample Car Parking
Refill Room
Garden Centre
Christmas Marquee Now Open

"A Mini Borough Market"
- Sunday Times
May 30 2021

Winners of the Muddy Stiletto Award
for The Best Farm Shop/Deli in
Somerset & Dorset 2021



New Independent Vets

Open Now



Event invitation: Open day 2nd of December
You'll find us at The Business Park, Crewkerne

Please visit us on Facebook & Instagram

Tel: 01460 297444

www.hamstonevets.co.uk
info@hamstonevets.co.uk

Hamstone Vets is an
Independent Veterinary
Practice based in Crewkerne.



The practice was founded with the mission to bring back the quality of care of the traditional vet's practice, with a personalised service that revolves around the needs of our clients - where we know every patient by name.

As a business, we have deep West Country roots. It's where the founders met and started working together and it's home to the local stone that inspired our name and forms the physical foundation of our practice.

We look forward to welcoming you into our practice when we open in the Autumn!



WARNERLEISUREHOTELS

Cricket St. Thomas

Spa & Wellness Club Membership

The gym or a swim?
The choice is yours

Call to enquire or join today
0330 135 9571

40TH ANNIVERSARY SCREENING

STAR WARS

RETURN OF THE JEDI

SAT 4TH
NOV 2PM

DOORS OPEN 1:30,
WADHAM SCHOOL

TICKETS £5

Book via www.ticketsource.co.uk/CrewSciFi
Phone: 07749614048 Email: Johnfacey1981@yahoo.co.uk

Stewart Baldwin
Your Local OvenGleamer

Book NOW for Christmas

Would you like your Oven, Range or AGA Gleamed?

"Stewart was on time & was very professional in my house, he was kind & very friendly. My oven is like brand new & I am very pleased with everything. I would have no hesitation in recommending OvenGleamers." Rosalind R.

- ✓ Full Strip Down Clean
- ✓ Inclusive Pricing
- ✓ Fully Qualified & Insured
- ✓ Easy Call, Quote & Book
- ✓ All Makes & Models
- ✓ Safe For Children/Pets
- ✓ Safe For Asthmatics
- ✓ COVID SAFE CLEANING

✓ All Work Backed By Our Satisfaction Guarantee

Call Now: **01460 455101**

www.ovengleamers.com
Ovens | Ranges | AGAs | Hobs | Extractors | BBQs

AISTHETA
Skin Clinic & Medical Aesthetics

GAYNOR HUGHES

Aesthetic Treatments

- Skin Rejuvenation
- Dermal Fillers
- Thread Veins
- Medical Skin Care
- Lines & Wrinkles

Free Consultations

Tel: 07866 438120
Email: info@aistheta.co.uk
Lyme Road, Crewkerne
TA18 8HE

www.aistheta.co.uk

CREWKERNE MUSEUM & HERITAGE CENTRE

Autumn and winter at the Heritage Centre are not as quiet as you may imagine. Our volunteers continue to come in on a weekly basis to carry out research for the public and the Collection Team are always busy with paperwork, sorting storage for new items and accessioning donations. Our lovely Grade 2 listed building is vulnerable to the weather so is constantly being checked to make sure the heavy rain doesn't flow through the doors and windows. We have invested time and money on renovation of the upstairs front windows and plan to install secondary glazing to cut heating bills and noise from passing traffic. Interior decoration is planned during the winter.

Winter events include our first Saturday in the month Coffee mornings when there's always a friendly face to welcome visitors. Talks and Teas happen each month from November and offer an interesting way to spend an



afternoon. Tickets on sale at the Heritage Centre. We are planning events for Lighting up evening so visit us to discover some Christmas traditions.

If you belong to a group that likes to visit a local venue we can offer an interesting way to spend an evening using old photographs and



items from the Collection. We continue to offer schools and preschools sessions to support their learning and activities.

Discovering the stories of Crewkerne people, Grace Perry for instance, can be fascinating. In Gallery 2 hangs a painting of Grace and her children. Research revealed that she worked for Robert Bird and lived in his cottages in South Street. The picture shows her busy at the loom in her cottage, many worked from home, and her

children would probably have helped by mending threads and accessing parts of the loom that an adult would find difficult. Grace ended her days in the alms houses built by Robert Bird for "aged



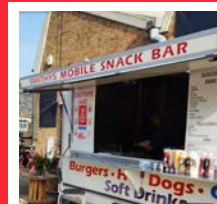
weavers". You can see the plaque, on the site of the houses, on the South Street car park garden wall.

We hope to arrange another visit to the archaeological dig site during coming months and plan to exhibit a series of photographs, taken at the site by Jeff Hutson, at some point next year.

If you are interested in the history of the area, either gaining information or volunteering with us why not get in touch? There's always something of interest and we welcome new volunteers to talk about what they like doing so we can find a job to suit them.

For information on all of the above visit www.crewkernemuseum.co.uk or crewkernemuseum@hotmail.co.uk

SMITHY'S Mobile Snack Bar



Friendly Team

AVAILABLE TO HIRE FOR ALL
YOUR FUNCTIONS

FOR MORE INFORMATION OR TO
HIRE SMITHY'S CALL US ON
07546 350873

LOCATED AT
THE ANTIQUES BAZAAR,
CREWKERNE

BUSINESS HOURS

Mon.	CLOSED	to	CLOSED
Tues.	9.30	to	3.30
Wed.	9.30	to	3.30
Thur.	9.30	to	3.30
Fri.	9.30	to	3.30
Sat.	9.30	to	3.30
Sun.	10.00	to	3.00

HOT FOOD

BACON SANDWICH
TEA & COFFEE

BURGERS

EGG SANDWICH

COLD DRINKS

ROLLS

HOT DOGS

CHIPS

CRISPS

and more..

Tasty Food

SMITHY'S MOBILE CATERING is a recently established Crewkerne business. Headed-up by **Pete Smith** and Pete's partner **Tracey**, they offer freshly prepared hot food, teas, coffees and soft drinks.

Conveniently located outside Antiques Bazaar, on the corner of South Street and Kithill, they operate from that site every day from 9.30 to 3.30, but are closed on a Monday.

This permanent "home" gives the team a great opportunity to make contact with customers to both Antiques Bazaar and The Factory Shop. Pete hopes to expand into off-site catering, taking his trailer to events, parties and functions. For more information please contact Pete on **07546 350873**.





01460 78986



**MOTs, Servicing, Repairs,
Diagnostics, Electric, Hybrid,
Air Conditioning R134a & R1234yf**

Tyres, Batteries, Exhausts

**Unit 4, Crewkerne Business Park
Crewkerne, TA18 7HJ**

01460 78986



#obsessedwithmypet
(...does this sound like you?)

- 🐾 The Pet Shop for all Companions
- 🐾 Harness Fitting Service
- 🐾 Nutrition, Gifts and Accessories
- 🐾 Canine Outfitters for the posh or practical
- 🐾 Garden Wildlife Food and Accessories

☎ 01460 77106

f @MyBestiePetShopCrewkerne

📷 mybestiepetshop

✉ info@mybestiepets.co.uk

🌐 mybestiepets.co.uk

10 The George Shopping Centre, Crewkerne, Somerset TA18 7LU



HIGHLY RATED
South West Care Agency
homecare.co.uk
★★★★★

*"With the support of
Libertas Mum's life has
been completely
transformed."*
Mr Brinson

Recruiting Now

Are you an experienced Care Worker or considering a new career in Care?

We offer both Minimum Contracted Hours or Bank (Casual) Contracts

Home Care pay from £12.00 to £12.50/hour Waking Night pay from £105 to £112/night

Plus Bank Holiday enhancements, pension, holiday, & mileage pay

Please call 01460 78726 for an informal chat

Providing high quality home care in & around Crewkerne

Live-In Care Domiciliary Care Social Support

Always caring, always
with a smile

libertas-care.co.uk • 01460 78726
admin@libertas-care.co.uk

"OLD" CREWKERNE

Photos kindly supplied
by David Bryant.



Barrett Bros Butchers.
Still going strong with the Pocock Family.



The last service in Christ's Church,
South Street, 1967. Since demolished
and now Christ Church Court.



Bill Perry,
Marwood Toms,
and new owner
Ted Grant.



Kings Garage, Lyme Road. In the
1940s & 50's Pennal King was
the owner of the garage. When
Pennal retired Ted Grant took
over the garage.



A very young Diane Bryant
(David's sister) in their family garden,
South Street, Crewkerne, 1960's.



**Meechams' Stores in South Street,
Crewkerne.** Photo with the late
Brian Meecham and his wife Doreen,
standing proudly in their shop doorway.
Reputedly this shop inspired Ronnie
Barker to create the TV hit
"Open All Hours".



The George Hotel, Market Square. To
the right Clarke. Later became Wilfred
Bryant Baker's Shop. (Grandfather of our
contributor David Bryant). In the 1940's
he sold to Dorset Farmers. Today this is
Boudicca Hairdressers.

EGF CARPETS & VINYL

We are a family run Carpet, Vinyl,
LVT, Sisal supply / fitting service
with over 25 years experience

- ✓ Hundreds of carpet and vinyl samples to choose from
- ✓ Synthetic and wool carpet samples
- ✓ Vinyl and LVT samples
- ✓ Family run business
- ✓ Samples brought to your door to select in the comfort of your own home
- ✓ Excellent customer service

Call or email us and speak to Clare or Edwin for advice and arrange a free no obligation appointment.

Telephone: 01460 68948
Mobile: 07900 103918
Email: seatrees@hotmail.co.uk
FURNHAM CRESCENT | CHARD | TA20 1AZ

BEALE HEATING & BUILDING LTD

BUILDING WORKS, CENTRAL
HEATING & PLUMBING

ALL BUILDING WORKS, EXTENSIONS,
KITCHENS, BATHROOMS, EN-SUITE
ADAPTIONS, BOILER INSTALLATIONS

CALL THE EXPERTS NOW
Kevin & Steve Beale
01460 240 519



Passmores Ltd - Home Delivery

Newspapers • Groceries • Magazines



07368 411662
passmoresltd@gmail.com
www.passmoresltd.co.uk

A small family business delivering
newspapers, milk, bread, eggs and much
much more to your doorstep

All our groceries come with FREE delivery and
no minimum order required

SUDOKU 1

8			4					
7	9		6	5				
6							7	
2			3	6	4			
	3	8			7	2		
						9	6	
								5
3								
9	4	7	5				8	

Level: **Easy**
 Date: _____
 Start time: _____
 Time to solve: _____

SUDOKU 2

2	5		3					7
				1	9			2
	9							
		5			7			1
			4		8			
				2				
7	8			2	4			
		4				3		5
				8				

Level: **Hard**
 Date: _____
 Start time: _____
 Time to solve: _____

OUR VERY POPULAR QUARTERLY PUBLICATION COULD HELP YOUR BUSINESS.

The Crewkerne Flyer is a colourful and eye-catching guide, distributed by Royal Mail to every business and private address in TA13, TA14, TA15, TA16, TA17 and TA18 postcodes. That is over 10,800 addresses, covering Crewkerne, Merriott, Misterton, Clapton, and The Hamstone Villages, north to the Lambrooks, and east to Montacute.

We publish 4 times a year - Spring, Summer, Autumn & Winter.

Our next edition for Spring 2024 will be out on 25 March.

Deadline 23 February 2024.

Advertising rates start from £40 plus VAT. We have our own graphics designers who can create a great advert for you absolutely free of charge.

For more information please contact
 Andy Munckton on 07823 346666
 or email theflyerpublications@gmail.com.

WE WANT YOUR BUSINESS TO SUCCEED

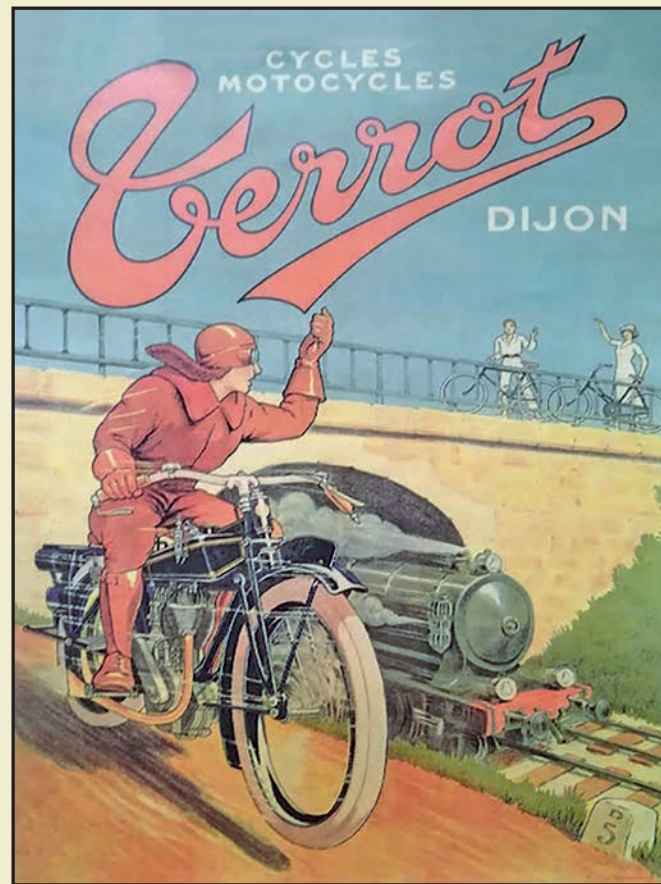
SUDOKU ANSWERS:

2	9	4	7	5	1	6	8	3
5	3	6	8	4	1	7	2	9
6	1	8	3	2	4	5	7	9
7	1	8	6	3	9	2	4	5
8	4	1	5	2	7	3	9	6
9	6	4	9	1	2	2	4	7
8	7	8	7	2	1	4	5	6
6	5	3	8	4	9	8	0	8
9	2	7	1	3	6	4	6	8
4	6	2	3	1	8	5	7	9
1	7	9	2	6	5	8	3	4
4	6	2	3	7	5	1	3	4
3	8	5	1	4	6	8	9	7
2	5	1	3	4	6	8	9	7



A Great Centre for Antiques and Collectables

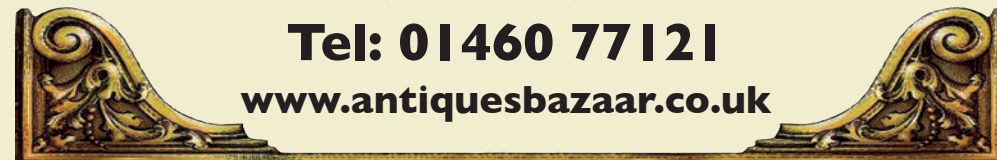
TRADING 7 DAYS A WEEK



The Old Textile Mill, South Street, Crewkerne. TA18 8AG

Tel: 01460 77121

www.antiquesbazaar.co.uk



Your number one sales and lettings team in and around Crewkerne



MAYFAIR
TOWN & COUNTRY

01460 74200

crewkerne@mayfairproperties.net



At TA20 4DQ

Newly renovated beer garden,
plenty of outdoor seating
and new childrens play area.



Wedding License holders - any enquiries to contact **01460 432946**
email - **windwhistleinn@gmail.com**



Like and Follow Facebook page and Instagram page
for regular updates and events @TheWindwhistleInn



WINDY WEEKLY DEALS

Burger & Pint Night
Every Tuesday

£15
per person

£10.95
per person

Mid Week Roasts
Every Wednesday: 12pm-2pm

£15
per person

Curry Night

Every Thursday - All you can eat buffett

Pizza & Pint Night
Every Friday

£15
per person

Fizz Friday - Every Friday
Bottle of Prosecco: £20 per person

£10
each

Small Plates
Monday - Friday: 12pm-3pm

Happy Hour

4pm-7pm Daily: £1 of all drinks

Sunday Carvery

12pm - 6pm

Kids Eat Free

With a paying adult

Regular live music

see our facebook for details

Opening and closing times: **Sun - Thur 12pm - 11pm** **Fri & Sat 12pm - 12am**

Homefire®

THE HEART OF YOUR HOME



HOME DELIVERY

Or collect from your local Homefire Depot

Coal & Solid Fuel

Firewood

BBQ Gas & Charcoal

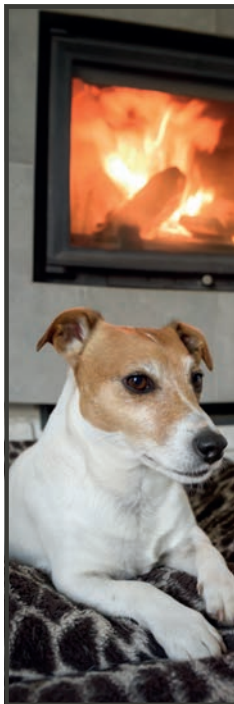
Compost

 Follow us on Facebook

01460 63377

www.homefire.co.uk

Homefire@ Chard Depot,
Beeching Close, Chard TA20 1BB



Carbin Heating Ltd

£200 OFF

all Oil & Gas Boiler Installations until 31st December 2023

SOME OF THE SERVICES WE PROVIDE:-

- Gas, LPG & Oil Boiler Installations
- Gas, LPG & Oil Boiler Servicing & Repairs
- Full Heating System Installations
- Oil Tank Installations
- Air Conditioning Installations
- Solar PV & Battery Storage Installations
- Radiator Installations
- Hot Water Cylinder Installations
- Gas & Oil Boiler Monthly Service Plans
- All General Heating Maintenance



Finance available on all Worcester-Bosch Boilers - subject to credit checks
Up to 12 years parts and labour guarantee Worcester-Bosch Gas Boilers
7 year parts and labour guarantee Worcester-Bosch Oil Boilers
Boilers to suit ALL BUDGETS and Properties
FREE no-obligation quotations



T: 01460 53823
E: office@carbinheating.com
www.carbinheating.com